

RULES FOR ALL EXHIBITORS

IMPORTANT NOTICE

The Farm Show will NOT mail premium (prize) checks. If your item earned a ribbon, you probably earned a cash award. If you cannot pick up your check Saturday night or Sunday from 1 PM to 2 PM, please drop off a long (#10) self-addressed stamped envelope in the Farm Show office before or during show week.

CHECKS MUST BE CASHED BY SEPTEMBER 30 OR THEY BECOME NULL AND VOID.

1. The Board of Directors of the Butler Farm Show has the right to accept or refuse any entries.
2. All exhibitors agree to be bound by the rules and regulations of Butler Farm Show. The show management reserves the right to amend or add to these rules and regulations as its judgment may determine.
3. NO alcoholic beverages, drugs, dogs or pets permitted on the grounds. (Only registered service dogs are admitted.) Persons using alcohol or other controlled substances will be expelled from the grounds. Minors caught drinking will be prosecuted to the full extent of the law.
4. Exhibitors will comply with all directions given by a Director, Farm Show Official or any police or security officer. Failure to immediately comply with the directions will be cause for the exhibitor to be disqualified and be prohibited from entering any future Butler Farm Show exhibitions or shows.
5. All exhibits will be shown under the direction of the Butler Farm Show Board of Directors and the appointed representative or department superintendents. The Butler Farm Show reserves the right to interpret all rules and regulations governing the show and will make decisions based on interpretation of the rules as may be necessary for the proper conduct of the show. All interpretations and decisions will be final.
6. The exhibitor agrees to and shall assume all risks of injury to people and/or animals and/or damage to any property.
7. Violations of the rules or conduct contrary to the best interest of the Butler Farm Show will not be permitted. Exhibitors or others who persist in such violations or conduct will be asked to remove their exhibits and to leave the grounds. No fees or charges will be refunded and premiums will not be paid in such cases.

8. Protests for any violation of the rules may be made to the Butler Farm Show Board of Directors by an exhibitor or their designated representative. All protests must be presented, in writing, to the Butler Farm Show Office within 24 hours of the alleged violation. A \$100.00 cash deposit must accompany all protests. Following investigation into the alleged violation, the \$100.00 deposit will be returned to the exhibitor if the protest is upheld. If the protest is denied, the \$100.00 fee is non-refundable. The decision of the Butler Farm Show Board of Directors regarding a protest shall be final and considered accepted by all exhibitors. Video footage, recorded by individuals, will not be reviewed as evidence in a protest situation.

RULES FOR ALL EXHIBITORS (CONT.)

9. LATE ENTRIES ARE NOT ACCEPTED in any department. NO EXCUSES - NO EXCEPTIONS. Check the entry time for each department you are entering and be on time.
10. Exhibitors must have an exhibitor's number. It starts with the initial of your last name and must be included when you write your number on entries. Call the office by the Friday before the show to obtain a new number or to retrieve your number from previous years. Use the same exhibitor's number for everything you enter in every department. Entries may be disqualified if the exhibitor's number, name and city are not on the tag.
11. All exhibits and exhibitors will be ready at 9:00 AM on the first day of show, except where judging is occurring.
12. Every precaution will be taken to protect the exhibits on display from injury and damage, but the Farm Show cannot, in any way, be held responsible for accidents, damage to or loss of property by water, fire, theft, or whatever may be the cause or extent of the damage or loss.
13. **Exhibits and/or exhibitors leaving the show early without permission will NOT receive premium checks; they will FORFEIT all award money, and next year's participation will be at the discretion of the board.**
14. Premiums as listed may be given for meritorious exhibits. In cases where there is no competition, judges may give an award such as they deem the exhibit is worthy to receive. Same rule applies where there are fewer entries in any class than the number of premiums offered. The judges may, at their discretion, award a prize or prizes of such grade as the exhibit deserves. Placement and premium on single entries in a class will be determined by the judge.
15. **Premium cards or ribbons have no value as to the payment of premiums. Premiums are paid only by the records in the judge's book. The office has that information after the show closes.**
16. The show reserves the right to determine how many entries they will accept from any exhibitor in the same class or in the same livestock species.
17. It is the responsibility of the exhibitor to present a plainly-marked entry tab showing the name of the exhibit they are entering. **Any item entered in the wrong category will be disqualified**, but the judges will mark the correct name of the entry on the tag for the benefit of the owner. **If there is a category listed for an entered item, the item may NOT be entered in "Other."** If award ribbons are stolen or destroyed, the exhibitor may receive a duplicate, free of charge, at the close of the show.
18. **Committees reserve the right to refuse any entry.** Furthermore, the committees reserve the right to bar from competition animals, vegetables, flowers, poultry products and home-produced articles of decidedly inferior quality and/or those not possessing sufficient merit to warrant recognition.
19. If the show management believes that any exhibits were made in previous years or not made by the exhibitor, those exhibits may be refused or disqualified.
20. The decision of the judges will be final in all cases except where mistakes, fraud, misrepresentation or collusion, not

RULES FOR ALL EXHIBITORS (CONT.)

discovered at the time of judging, is proven. In that case, such person(s) as the Board of Directors may appoint will make the decision.

21. **The show management may, at any time, order the removal of any exhibit or part of exhibit in bad condition, and any article unfit to show may be excluded.** Exhibits may NOT be removed at any time before the close of the show except by consent of the management. Removal of an exhibit without consent of the department superintendent will forfeit all premiums and next year's participation will be at the discretion of the board.
22. **During the judging, buildings, except livestock arenas, are closed to everyone except fair officials, judges, and necessary attendants.** An exhibitor or his/her agent shall NOT communicate with the judge during time of determining the awards, except to answer questions proposed by the judges. Any exhibitor interfering with the judge while making awards shall forfeit any premiums to which he/she would otherwise be entitled. **Buildings for Departments 11 - 23 will be opened by approximately 4:00 on Monday.**

The Premium Book serves as a guide and is subject to change. While every effort has been made to ensure the accuracy, the Board of Directors reserves the right to add, alter or change this information as necessary.

AUCTIONS

Have you ever attended a real, live auction?
Here are 4 chances to enjoy the
experience and fun of a bidding sale.

BAKED GOODS AUCTION
MONDAY, AUGUST 8, AT 7:00 PM
in the Dairy Pavilion

BUY THE BEST THAT BUTLER COUNTY BRINGS!

CHEESE AUCTION
WEDNESDAY,
AUGUST 10, AT 8:00 PM
in the Dairy Pavilion

**CHOICE CHEESE FROM
CONTENTED COWS!**



ANNUAL JUNIOR LIVESTOCK SALE
THURSDAY, AUGUST 11, AT 6:00 PM
(Opening Ceremonies start at 5:30)
in the Livestock Barn

FEED YOUR FAMILY; FILL YOUR FREEZER!
Sale Order: Charity Animal, Poultry, Hogs,
Goats, Lambs, Rabbits, & Beef

ANNUAL 4-H BENEFIT AUCTION
SATURDAY, OCTOBER 15, AT 6:00 PM
at the EAST BUTLER FIRE HALL

DEPARTMENT 18

NEEDLECRAFT

SUPERINTENDENT – JUDY SUTTON

ENTRY DROP OFF: SUNDAY, AUGUST 7 - 1:00 PM - 4:00 PM
at the Art & Crafts/Quilts Buildings.

Late entries NOT accepted.

Use the Pit Gate (Buttercup Rd.) for drop off / pick up.

ENTRY PICK UP: SUNDAY, AUGUST 14 - 1:00 PM - 2:00 PM

Premium checks will be available at pick up or Saturday 6 - 8 PM.
(Checks are not mailed unless you previously
dropped off a self-addressed stamped envelope.)

***Anyone removing their exhibits before Sunday
will forfeit their premiums (cash awards), and participation in
next year's show is at the discretion of the Board.***

RULES AND REGULATIONS

- 1. Refer to *Rules for all Exhibitors* (page 24).**
- 2. ONE ENTRY PER CLASS PER EXHIBITOR.**
- 3. THIS DEPARTMENT IS OPEN TO ALL AGES.**
- 4. PERSONS PICKING UP ITEMS MUST HAVE THE CLAIM CHECKS. NO EXCEPTIONS.** The Farm Show is not responsible for items not claimed at this time. Unclaimed items may be picked up at the Farm Show Office from 1 PM to 2 PM the next Sunday, August 21, or by appointment (call 724-482-4000). Those not claimed will be disposed of at the discretion of the committee. The Butler Farm Show cannot be held responsible for damage or loss.
- 5. Exhibitors must have an exhibitor's number.** Call the office by Friday before the show to obtain a new number or retrieve your number from previous years. It starts with the initial of your last name. Be sure to include it on your entry tags. **Entries may be disqualified if the exhibitor's number, name and city are not on the tag.**
- 6. Exhibitors may obtain a premium book & entry tags before the Farm Show. Fill out ONLY your exhibitor's number, name and city. Our volunteers will complete the other info. IMPORTANT: DO NOT REMOVE ANY PART OF THE TAG BEFORE ENTERING. ALL 3 PARTS OF THE TAG MUST BE ON THE ITEM WHEN IT IS BROUGHT TO THE SHOW. (THE CLAIM CHECK MUST BE WITH THE ITEM.) DO NOT USE TAPE TO ATTACH THE ENTRY TAG TO YOUR ENTRY.**
- 7. ONLY THE VOLUNTEERS IN THIS DEPARTMENT WILL ATTACH ENTRY TAGS AND/OR RIBBONS TO ANY DISPLAYS.**
- 8. All articles must have been completed since the close of last year's show BY THE EXHIBITOR** or as noted for the class. If the Farm Show Management believes that any of the exhibits were made or shown in previous years, those exhibits may be refused and/or disqualified and will forfeit any prize money and ribbons.
- 9. Any entry found NOT to be the work of the exhibitor will BE DISQUALIFIED** and will result in the loss of ALL premiums for that exhibitor.
- 10. All items are to be clean, neat, and free of pet hair.**
- 11. Pictures and wallhangings MUST be ready to hang with SAWTOOTH or secured WIRE hanger (no tape) - NO EXCEPTIONS.** The Farm Show is not responsible for unsecure hangers that may cause damage to any item.
- 12. Items will be displayed as space permits.**
- 13. DECISIONS OF THE JUDGES ARE FINAL.** Judges may refuse to make any award if, in their judgement, the exhibit is unworthy, or they may make an award according to the merit of the exhibit. Placement and premium on a single entry in a class will be determined by the judge.
- 14. The buildings are closed during judging and set-up on Monday.** They will open at approximately 4:00 PM.

DEPT. 18 SECTION 1 CLOTHING

*The BEST OF SHOW rosette winner will be selected by the judge from the blue ribbon winners.

1. All items must be completed by the exhibitor since the last Butler Farm Show. **If any entry is discovered to have been made before last year's show or shown in previous years, it will be disqualified and ribbons and prize money will be forfeited.**

JUDGING: Each entry will be judged on workmanship, neatness, suitability of material, overall attractiveness and difficulty of design.

CLASS

PREMIUMS:

1. APRONS ... 1st - \$5. 2nd - \$4. 3rd - \$3.

PREMIUMS (CASH AWARDS) FOR CLASSES 2 - 24:

- 1st - \$7. 2nd - \$6. 3rd - \$5.

CHILDREN'S GARMENTS

2. BLOUSE OR SHIRT
3. CHILD'S COAT OR JACKET
4. GIRL'S DRESS
5. OUTFIT - INFANT'S
6. OUTFIT - GIRL'S OR BOY'S
7. CHILD'S SLEEPWEAR

BLOUSES, SHIRTS, SKIRTS

8. BLOUSE - COTTON OR COTTON BLEND
9. BLOUSE - SILK OR SILK-LIKE FABRIC
10. SHIRT - MAN'S
11. SKIRT - COTTON OR COTTON BLEND
12. SKIRT - OTHER FABRIC
13. CASUAL WEAR

ADULT DRESS 1 OR 2 PIECE

14. DRESS - COTTON OR COTTON BLEND
15. DRESS - OTHER THAN COTTON
16. FORMAL DRESS (LONG OR SHORT)
17. 2-PIECE OUTFIT

18. HOLIDAY APPAREL

19. **JACKET** Lady's or Man's (Any Fabric)

20. **SLACKS** Any Fabric

21. **SUIT** Any Fabric

22. **VEST**

23. **ADULT SLEEPWEAR**

24. **ANY OTHER GARMENT NOT LISTED**

DEPT. 18 SECTION 2 NEEDLEWORK

*The BEST OF SHOW rosette winner will be selected by the judge from the blue ribbon winners.

Thank you for understanding that we try our best to display an entire entry; however, we are restricted by our limited space and the quantity of entries.

1. All items must be completed by the exhibitor since the last Butler Farm Show. **If any entry is discovered to have been made before last year's show or shown in previous years, it will be disqualified and ribbons and prize money will be forfeited.**

<p>2. IMPORTANT: DO NOT REMOVE ANY PART OF THE TAG BEFORE ENTERING. ALL 3 PARTS OF THE TAG MUST BE ON THE ITEM WHEN IT IS BROUGHT TO THE SHOW. (THE CLAIM CHECK MUST BE WITH THE ITEM.) DO NOT USE TAPE TO ATTACH THE ENTRY TAG TO YOUR ENTRY.</p>

3. **ONLY THE VOLUNTEERS IN THIS DEPARTMENT WILL ATTACH ENTRY TAGS AND/OR RIBBONS TO ANY DISPLAYS.**

JUDGING: Each entry will be judged on workmanship, neatness, suitability of material, overall attractiveness and difficulty of design.

DEPT. 18 SECTION 2 NEEDLEWORK (CONT.)

PREMIUMS (CASH AWARDS) FOR CLASSES 1 - 53:

CLASS 1st - \$5. 2nd - \$4. 3rd - \$3.

1. **BIBS, Any**
2. **CUSHIONS, CROCHETED**
 3. HAND-EMBROIDERED CUSHION
 4. KNITTED CUSHION
 5. QUILTED CUSHION
 6. MACHINE-EMBROIDERED CUSHION
 7. COUNTED CROSS STITCH CUSHION
 8. PIN CUSHION (Any medium)
 9. ANY OTHER CUSHION
10. **DOILIES, CROCHETED EDGE**
 11. CROCHETED SOLID DOILY
 12. HAND-EMBROIDERED DOILY
 13. ANY OTHER DOILY
14. **DOLL, CROCHETED**
 15. HAND-KNITTED DOLL
 16. SEWN (HAND OR MACHINE) DOLL
 17. ALL DOLL CLOTHES SHOWN ON PURCHASED DOLL
 18. ANY OTHER DOLL

EMBELLISHED READY-MADE CLOTHING

19. HAND-EMBROIDERED
20. MACHINE-EMBROIDERED
21. APPLIQUED (SEWN)
22. **HANDSPUN ARTICLES**
23. **PILLOW CASES, PAIR, CROCHETED EDGE**
 24. EMBROIDERED PILLOW CASES
 25. CROSS STITCH PILLOW CASES
 26. ANY OTHER PILLOWCASES
27. **PLACE MATS** Set of 4, any fabric
28. **POT HOLDERS** Any Fabric
29. **TABLE SCARVES & RUNNERS, CROCHETED EDGE**
 30. CROCHETED SOLID TABLE SCARF/RUNNER
 31. HAND-EMBROIDERED TABLE SCARF/RUNNER
 32. HOLIDAY TABLE SCARF/RUNNER
 33. ANY OTHER TABLE SCARF/RUNNER

34. **TATTED ITEM**
35. **TOYS, STUFFED ANIMAL**
 36. ANY OTHER TOY

WEARING APPAREL

37. HAT - CROCHETED
 38. HAT - KNITTED BY HAND
 39. MITTENS OR GLOVES - CROCHETED
 40. MITTENS OR GLOVES - KNITTED BY HAND
 41. SCARF - CROCHETED OR KNITTED BY HAND
 42. SOCKS, SLIPPERS / BOOTIES - CROCHETED
 43. SOCKS, SLIPPERS / BOOTIES - KNITTED BY HAND
 44. ALL STOLE, SHAWLS OR PONCHOS
45. **ANY MACHINE-KNIT ARTICLE**

MISCELLANEOUS

46. LOOM-KNITTED ITEM
 47. PLASTIC CANVAS - MAXIMUM OF 3 PIECES
 48. WHEELCHAIR OR WALKER ACCESSORY
 49. E-READER CASE
 50. TISSUE BOX
 51. USEFUL ARTICLE NOT ALREADY LISTED
 52. SEWN ARTICLE NOT LISTED
 53. TOTE BAG/PURSE - NOT QUILTED
- PRIZES for 54 - 71:.. 1st - \$6.00 2nd - \$5.00 3rd - \$4.00**
- BABY SWEATERS WITH CAP OR BOOTIES**
54. CROCHETED BY HAND
 55. KNITTED BY HAND

DEPT. 18 SECTION 2 NEEDLEWORK (CONT.)

CLASSES 56 & 57 - CROCHETED OR KNITTED BY HAND

56. **DRESS** CHILD'S OR ADULT'S
57. **OUTFIT** CHILD'S OR ADULT'S - 2 OR 3 PIECE
CARDIGAN SWEATERS
 58. CHILD'S HAND-CROCHETED CARDIGAN
 59. CHILD'S HAND-KNITTED CARDIGAN
 60. ADULT'S HAND-CROCHETED CARDIGAN
 61. ADULT'S HAND-KNITTED CARDIGAN**PULLOVER SWEATERS**
 62. CHILD'S HAND-CROCHETED PULLOVER
 63. CHILD'S HAND-KNITTED PULLOVER
 64. ADULT'S HAND-CROCHETED PULLOVER
 65. ADULT'S HAND-KNITTED PULLOVER
66. **TABLECLOTHS**, ALL CROCHETED
 67. HAND-EMBROIDERED TABLECLOTH
 68. HOLIDAY TABLECLOTH
 69. ANY OTHER TABLECLOTH
70. **VESTS** Crocheted or knitted by hand
71. **ALL OTHER** crocheted or knitted items not listed

DEPT. 18 SECTION 3 NEEDLEWORK PICTURES

1. Pictures must be framed.
 2. Finished size not to exceed 24" x 30" including matting (if used) and frame.
 3. **Pictures MUST be ready to hang with metal saw-tooth or secured wire hanger. (tape, cardboard or tape hooks will NOT be accepted) - NO EXCEPTIONS.**
The Farm Show is not responsible for unsecure hangers that may cause damage to any item.
 4. All items must be completed by the exhibitor since the last Butler Farm Show. **If any entry is discovered to have been made before last year's show or shown in previous years, it will be disqualified and ribbons and prize money will be forfeited.**
 5. **ONLY THE VOLUNTEERS IN THIS DEPARTMENT WILL ATTACH ENTRY TAGS AND/OR RIBBONS TO ANY DISPLAYS.**
- JUDGING:** Each entry will be judged on workmanship, neatness, overall attractiveness and difficulty of design.
- CASH AWARDS: 1st - \$7. 2nd - \$6. 3rd - \$5.**

1. **CREWEL OR EMBROIDERED**
2. **CROSS STITCH UNDER 9" stitching/any direction**
 3. **CROSS STITCH 9"-16" stitching/any direction**
 4. **CROSS STITCH OVER 16" stitching/any direction**
 5. **CROSS STITCH SET OF TWO**
6. **HARDANGER**
7. **NEEDLEPOINT**
8. **FABRIC ART**
9. **ALL OTHERS**

DEPT. 18 SECTION 4 AFGHANS

*The BEST OF SHOW rosette winner will be selected by the judge from the blue ribbon winners.

Thank you for understanding that we try our best to display an entire entry; however, we are restricted by our limited space and the quantity of entries.

1. Knitted and crocheted afghans will be judged on difficulty of stitch, gauge of stitch, workmanship, neatness, and overall attractiveness.
2. All items must be completed by the exhibitor since the last Butler Farm Show. **If any entry is discovered to have been made before last year's show or shown in previous years, it will be disqualified and ribbons and prize money will be forfeited.**

DEPT. 18 SECTION 4 AFGHANS (CONT.)

3. ONLY THE VOLUNTEERS IN THIS DEPARTMENT WILL ATTACH ENTRY TAGS AND/OR RIBBONS TO ANY DISPLAYS.

JUDGING: Each entry will be judged on difficulty of stitch, gauge of stitch, workmanship, neatness and overall attractiveness.

AWARDS for 1 - 2:... 1st - \$8. 2nd - \$7. 3rd - \$6.

BABY AFGHAN - No larger than 36" x 45"

1. CROCHETED
2. KNITTED BY HAND

AWARDS for 3 - 12 .. 1st - \$11. 2nd - \$10. 3rd - \$9.

AFGHAN - Approximate size 48" x 60"

3. AFGHAN STITCH
4. GRANNY SQUARE
5. RIPPLE STITCH
6. ALL OTHER CROCHETED
7. KNITTED BY HAND
8. ALL OTHER NOT KNITTED OR CROCHETED
9. **BED SPREAD** - All crocheted or knitted by hand.
10. **PICTURE AFGHAN**, CROCHETED
11. **PICTURE AFGHAN**, KNITTED
12. **MYSTERY AFGHAN BLOCK** **New Class**

Entry is a 4" knitted OR crocheted block of a background color. (Next year, class will be for a coordinating primary color block. Will be asked to submit both next year.)

Thank you for understanding that we try our best to display an entire entry; however, we are restricted by our limited space and the quantity of entries..

DEPT. 18 SECTION 5 PRE-QUILTED

CLASS 1st - \$6. 2nd - \$5. 3rd - \$4.

1. **Embroidered Pre-Quilted Item**

DEPT. 18 SECTION 6 QUILTING

*The BEST OF SHOW rosette winner will be selected by the judge from the blue ribbon winners.

Thank you for understanding that we try our best to display an entire entry; however, we are restricted by our limited space and the quantity of entries.

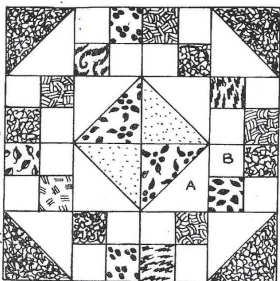
1. **All work, including quilting, must be completed since the last Butler Farm Show. If any entry is discovered to have been made before last year's show or shown in previous years, it will be disqualified and ribbons and prize money will be forfeited.**
 2. If quilted by other(s), enter in appropriate class.
 3. **Please print the name the quilt pattern on your tag.**
 4. **ONLY THE VOLUNTEERS IN THIS DEPARTMENT WILL ATTACH ENTRY TAGS AND/OR RIBBONS TO ANY DISPLAYS.**
- JUDGING:** Each entry will be judged on complexity of design, uniformity of stitching, neatness and overall attractiveness.

*Thank you, Volunteers,
for your tireless help and friendly smiles
even in the midst of check-in and take-out times.
You make the Farm Show what it is - Fun & Family-Friendly.*

DEPT. 18 SECTION 6 QUILTING (CONT.)

CLASS 1st - \$6. 2nd - \$5. 3rd - \$4.

1. **THEMED QUILT BLOCK CONTEST - 12 1/2" x 12 1/2"**
Unquilted, hand-pieced block - must be hand-sewn
SINGLE IRISH CHAIN



This design is a good way for using up all sorts of remnants. Dark and light scraps show off the design to its best advantage. **Your entry must be a 12 1/2" x 12 1/2" unfinished block so it would be a 12" x 12" finished block.**

A more complete pattern is available at the Farm Show office or on the website, www.butlerfarmshow.com.

ANNOUNCEMENT:

This contest is dedicated to the memory of Mrs. Thelma Fleeger, a volunteer since the show started, who always selected the pattern for the block.

PRIZES for 2 - 10:...1st - \$11. 2nd - \$10. 3rd - \$9.

MINI QUILTS - Approximate size 36" x 54"

2. APPLIQUED
3. EMBROIDERED
4. PIECED

MACHINE QUILTED QUILTS - NO LARGER THAN 100" X 92"

5. APPLIQUED
6. EMBROIDERED
7. HAND-PIECED
8. MACHINE-PIECED
9. ALL OTHER
10. MACHINE-QUILTED BY NON-EXHIBITOR/GROUP
Show name of quilter or group

PRIZES for 11 - 17:...1st - \$14. 2nd - \$12. 3rd - \$10.

HAND QUILTED QUILTS - NO LARGER THAN 100" X 92"

11. APPLIQUED
12. EMBROIDERED
13. HAND-PIECED
14. MACHINE-PIECED
15. MULTI-MEDIUM (Uses any embellishments such as buttons, lace, etc.)
16. ALL OTHER
17. HAND-QUILTED BY NON-EXHIBITOR OR GROUP
Show name of quilter or group

PRIZES for 18 - 25: 1st - \$7. 2nd - \$6. 3rd - \$5.

18. **QUILT** Knotted
19. **QUILTED TOTE/PURSE**
20. **STROLLER/DOLL QUILT** - Approximate size 25" x 30"
21. **TABLE SCARVES & RUNNERS** Hand or machine quilted
WALL HANGINGS (Displayed as space permits)
MUST be ready to hang - NO EXCEPTIONS.
The Farm Show is not responsible for unsecure hangers that may cause damage to any item.
22. **QUILTED & APPLIQUED WALL HANGING**
23. **QUILTED & EMBROIDERED WALL HANGING**
24. **QUILTED & PIECED WALL HANGING**
25. **ANY OTHER QUILTED ARTICLE**, Not bed or wall

Thank you for understanding that we try our best to display an entire entry; however, we are restricted by our limited space and the quantity of entries..

DEPT. 18 SECTION 7 RUGS

1. All items must be completed by the exhibitor since the last Butler Farm Show. **If any entry is discovered to have been made before last year's show or shown in previous years, it will be disqualified and ribbons and prize money will be forfeited.**

JUDGING: Each entry will be judged on workmanship, suitability of material, difficulty of design, neatness and overall attractiveness.

CLASS *1st - \$10. 2nd - \$8. 3rd - \$6.*

1. **FABRIC RUGS**, Made from fabric
2. **YARN RUGS**, Made from yarn
3. **ALL OTHER RUGS**, Made from any other material

DEPARTMENT 19 ARTS & CRAFTS

SUPERINTENDENT – JUDY SUTTON

NEW CLASSES FOR '22

PAPER LAYERING GREETING CARDS & INVITATIONS

(Section 4 Classes 30 - 32)

2022 PHOTOGRAPHY SPECIAL -

OLD FARM EQUIPMENT TAKEN OVER BY NATURE

ENTRY DROP OFF: SUNDAY, AUGUST 7 - 1:00 PM - 4:00 PM
at the Art & Crafts/Quilts Buildings.

Late entries NOT accepted.

Use the Pit Gate (Buttercup Rd.) for drop off / pick up.

ENTRY PICK UP: SUNDAY, AUGUST 14 - 1:00 PM - 2:00 PM

Premium checks will be available at pick up or Saturday 6 - 8 PM.

(Checks are not mailed unless you previously dropped off a self-addressed stamped envelope.)

Anyone removing their exhibits before Sunday will forfeit their premiums (cash awards), and participation in next year's show is at the discretion of the Board.

RULES AND REGULATIONS

1. Refer to *Rules for all Exhibitors* (page 24).
2. **ONE ENTRY PER CLASS PER EXHIBITOR.**
3. THIS DEPARTMENT IS OPEN TO ALL AGES.
4. **PERSONS PICKING UP ITEMS MUST HAVE THE CLAIM CHECKS. NO EXCEPTIONS.** The Farm Show is not responsible for items not claimed at this time. Unclaimed items may be picked up at the Farm Show Office from 1 PM to 2 PM the next Sunday, August 21, or by appointment (call 724-482-4000). Those not claimed will be disposed of at the discretion of the committee. The Butler Farm Show cannot be held responsible for damage or loss.
5. Exhibitors must have an exhibitor's number. Call the office by Friday before the show to obtain a new number or retrieve your number from previous years. It starts with the initial of your last name. Be sure to include it on your entry tags. **Entries may be disqualified if the exhibitor's number, name and city are not on the tag.**
6. Exhibitors may obtain a premium book & entry tags before the Farm Show. Fill out **ONLY** your exhibitor's number, name and city. Our volunteers will complete the other info.

IMPORTANT: DO NOT REMOVE ANY PART OF THE TAG BEFORE ENTERING. ALL 3 PARTS OF THE TAG MUST BE ON THE ITEM WHEN IT IS BROUGHT TO THE SHOW. (THE CLAIM CHECK MUST BE WITH THE ITEM.) DO NOT USE TAPE TO ATTACH THE ENTRY TAG TO YOUR ENTRY.

DEPT. 19 ARTS & CRAFTS

- 7. ONLY THE VOLUNTEERS IN THIS DEPARTMENT WILL ATTACH ENTRY TAGS AND/OR RIBBONS TO ANY DISPLAYS.**
8. All articles must have been completed **since the close of last year's show BY THE EXHIBITOR** or as noted for the class. If the Farm Show Management believes that any of the exhibits were made or shown in previous years, those exhibits may be refused and/or disqualified and will forfeit any prize money and ribbons.
9. Any entry found NOT to be the work of the exhibitor will BE **DISQUALIFIED** and will result in the loss of ALL premiums for that exhibitor.
- 10. All items are to be clean, neat, and free of pet hair.**
11. Items will be displayed as space permits.
- 12. DECISIONS OF THE JUDGES ARE FINAL.** Judges may refuse to make any award if, in their judgement, the exhibit is unworthy, or they may make an award according to the merit of the exhibit. Placement and premium on a single entry in a class will be determined by the judge.
- 13. The buildings are closed during judging and set-up on Monday.** They will open at approximately 4:00 PM.

DEPT. 19 SECTION 1 PAINTINGS & DRAWINGS

*The **BEST OF SHOW** rosette winner will be selected by the judge from the blue ribbon winners.

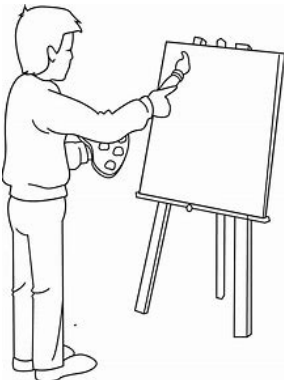
1. All items must be completed by the exhibitor since the last Butler Farm Show. **If any entry is discovered to have been made before last year's show or shown in previous years, it will be disqualified and ribbons and prize money will be forfeited.**
2. **Paintings and drawings MUST be ready to hang with metal saw-tooth or secured wire hanger. (tape, cardboard or tape hooks will NOT be accepted) - NO EXCEPTIONS.** The Farm Show is not responsible for unsecure hangers that may cause damage to any item.
3. **NOT to exceed 16" x 20" inside the frame. Finished size not to exceed 24" x 30" including matting (if used) & frame (if used).**

JUDGING: Entry will be judged on composition, technique and overall attractiveness.

CASH AWARDS:.....1st - \$8. 2nd - \$7. 3rd - \$6.

CLASS

- | | |
|--------------------------|------------------------|
| 1. LEAD PENCIL | 6. ACRYLICS |
| 2. COLORED PENCIL | 7. OIL PASTELS |
| 3. PEN & INK | 8. WATER COLORS |
| 4. CHARCOAL | 9. MIXED MEDIA |
| 5. PASTELS | |



**DEPT. 19 SECTION 2 PHOTOGRAPHS
(SINGLE PHOTOS ONLY)**

*The BEST OF SHOW rosette winner will be selected by the judge from the blue ribbon winners.

1. Photos are NOT to be framed or matted. Photos with any type of frame or matting will NOT be accepted. (The committee will place photo in a page protector.)
2. ONLY 8" x 10" photos on PHOTO PAPER will be accepted. SMALLER OR SQUARE PICTURES OR USE OF ANY OTHER PAPER OR CARDSTOCK WILL NOT BE ACCEPTED.
3. In order to present each photo in a standard design, photos must be kept in their original shape - rectangular. Square pics on 8" x 10" paper do NOT qualify.
4. If you enter a photo in black & white, you cannot enter the same photo in color. If you enter a photo in color, you cannot enter the same photo in black & white. A photo may be entered in only 1 class - the same photo may not be entered in any other class or section.
5. All items must be completed by the exhibitor since the last Butler Farm Show. If any entry is discovered to have been taken before last year's show or shown in previous years, it will be disqualified and ribbons and prize money will be forfeited.

JUDGING: Each photo will be judged on print clarity and quality, interest of subject, composition of picture and camera technique.

CASH PRIZES:.....1st - \$5. 2nd - \$4. 3rd - \$3.

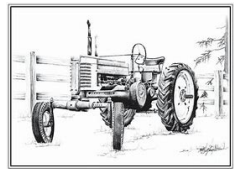
PHOTO BLACK & WHITE, 8" X 10" ONLY

1. **ANNUAL SPECIAL CLASS**
OLD FARM EQUIPMENT TAKEN OVER BY NATURE
2. 1 PERSON
3. 2 OR MORE PEOPLE
4. ANIMALS
5. FLOWERS
6. INSECTS
7. SCENIC
8. SPORTS ACTION
9. ALL OTHER B & W



PHOTO COLOR, 8" X 10" ONLY

10. **ANNUAL SPECIAL CLASS**
OLD FARM EQUIPMENT TAKEN OVER BY NATURE
11. 1 PERSON
12. 2 OR MORE PEOPLE
13. ANIMALS
14. FLOWERS
15. INSECTS
16. SCENIC
17. SPORTS ACTION
18. ENHANCED OR ALTERED
19. ALL OTHER COLOR



LIFE IS LIKE A CAMERA

Just FOCUS on what's important.

Capture the GOOD TIMES.

Develop from THE NEGATIVES.

And if things don't work out,

JUST TAKE ANOTHER SHOT.



DEPT. 19 SECTION 4 HANDCRAFTS

*The BEST OF SHOW rosette winner will be selected by the judge from the blue ribbon winners.

NEW FOR '22

CLASSES FOR PAPER LAYERING (30, 31, 32)

1. Floral arrangements must be no taller than 16 inches.
2. Items will be displayed as space permits.
3. Items **MUST** weigh **LESS THAN 30 POUNDS**.
4. All items must be completed by the exhibitor since the last Butler Farm Show. **If any entry is discovered to have been made before last year's show or shown in previous years, it will be disqualified and ribbons and prize money will be forfeited.**

JUDGING: Each entry will be judged on workmanship, creativity, neatness and overall attractiveness.

PREMIUMS for 1-23:....1st - \$5. 2nd - \$4. 3rd - \$3.

1. **JEWELRY**
 2. **ALL BEAD WORK - OTHER THAN JEWELRY**
 3. **ARTIFICIAL FLOWER CENTERPIECE ARRANGEMENT**
 4. ONE-SIDED ARRANGEMENT
 5. HAND-MADE FLOWERS
 6. CHRISTMAS FLORAL ARRANGEMENT
 7. **SINGLE CHRISTMAS ORNAMENT, NEEDLEWORK**
 8. SINGLE CHRISTMAS ORNAMENT, Other than Needlework
 9. **CHRISTMAS, PAINTED ON WOOD**
 10. CHRISTMAS STOCKING
 11. CHRISTMAS WREATH - No larger than 20"
(Must be ready to hang)
 12. CHRISTMAS, ALL OTHER
 13. **CREATIVE HOLIDAY, NOT CHRISTMAS OR WREATH**
 14. CREATIVE HOLIDAY FLORAL ARRANGEMENT, Not Christmas
 15. CREATIVE HOLIDAY WREATH - No larger than 20"
(Must be ready to hang)
 16. **WREATH, NOT CHRISTMAS OR HOLIDAY**
No larger than 20" (Must be ready to hang)
 17. **CALLIGRAPHY - Poem on 8 1/2" x 11" (Unframed)**
 18. **CREATIVE DOLL**
READY-MADE DECORATED CLOTHING,
 19. APPLIQUE & PAINT
 20. HAND-PAINTED
 21. DECORATED CLOTHING, ALL OTHERS
 22. **SPINNER, HAND-MADE - No longer than 24" overall**
 23. **WIND CHIMES, HAND-MADE - No longer than 24" overall**
- AWARDS FOR 24-43:....1st - \$6. 2nd - \$5. 3rd - \$4.**
24. **BASKET, ALL HAND WOVEN**
 25. **DIAMOND DOTZ - Finished size not to exceed 16" x 20"**
(Framed but ONLY picture judged.)
 26. **FLAG - No bigger than 18" x 24"**
 27. **PAINT ON FABRIC**
 28. **PAINT ON WOOD, SMALL FURNITURE**
 29. **PAINT BY NUMBER - Finished size not to exceed 16" x 20"**
(Frame optional.)
 30. **PAPERCRAFT - PAPER LAYERING** **New Class**
HOLIDAY CARD, Finished size quarter fold - 4 1/4" x 5 1/2"
 31. **PAPERCRAFT - PAPER LAYERING** **New Class**
BIRTHDAY CARD, Finished size quarter fold - 4 1/4" x 5 1/2"
 32. **PAPERCRAFT - PAPER LAYERING** **New Class**
INVITATION, Finished size quarter fold - 4 1/4" x 5 1/2"
 33. **TOY, HANDCRAFTED, Other than needlework**
 34. **WEAVING**

DEPT. 19 SECTION 4 HANDCRAFTS (CONT.)

CLASSES 35 - 48: NO LARGER THAN 18" X 18" X 18"

35. BIRDHOUSE
36. BIRD FEEDER
37. PAINT ON SLATE
38. PAINT ON WOOD, PLAQUES
39. PAINT ON WOOD, OTHERS
40. PAINTED OBJECT, Not Wood, Fabric, Slate or Christmas
41. USEFUL CRAFT ITEM, Not eligible for other class
42. ANY OTHER CRAFT ITEM, Not eligible for other class
43. ESSENCE OF THE FARM SHOW -

Any craft that depicts the Farm Show

PRIZES for 44-48:...1st - \$8. 2nd - \$7. 3rd - \$6.

44. CAST PLASTER - painted, slip cast mold
45. CERAMIC, STAINED - painted, slip cast mold
46. CERAMIC, GLAZED - painted, slip cast mold
47. HOMEMADE POTTERY/CERAMICS - without a mold
48. SAW OR BLADE, PAINTED

DEPT. 19 SECTION 5 METAL & WOOD CRAFTS

***The BEST OF SHOW rosette winner will be selected by the judge from the blue ribbon winners.**

1. Items will be displayed as space permits.
2. Items MUST weigh LESS THAN 30 pounds.
3. All items must be completed by the exhibitor since the last Butler Farm Show. **If any entry is discovered to have been made before last year's show or shown in previous years, it will be disqualified and ribbons and prize money will be forfeited.**

CASH AWARDS:.....1st - \$8. 2nd - \$7. 3rd - \$6.

CLASS

1. HAND-CRAFTED FARM TRACTOR -
NO BIGGER THAN 12" X 8" X 8"

ENTRIES IN CLASSES 2-14:

NO BIGGER THAN 18" WIDE X 24" HIGH X 24" LONG.

2. IN-LAID WORK WITH WOOD
3. LEATHER, ALL
4. METAL OR TIN WORK
5. SCROLL SAW
6. RELIEF CARVING
7. HANDCARVED ANIMAL
8. HANDCARVED BIRD OR DUCK
9. HANDCARVED CANE - UP TO 36"
10. HANDCARVED WALKING STICK - 37" - 48"
11. LATHE/TURNING
12. WOODBURNING
13. OTHER WHITTLING
14. OTHER WOOD

DEPT. 19 SECT. 6 HOUSEHOLD FURNISHINGS

Entries MUST weigh LESS THAN 30 POUNDS.

JUDGING: Each entry will be judged on difficulty of project, quality of work and overall appearance.

CASH AWARDS:.....1st - \$9. 2nd - \$8. 3rd - \$7.

CLASS

1. REFINISHED FURNITURE, SMALL
2. CANING

***Be sure to visit the MOBILE AG LAB.
Everything you wanted to know about ag
but were afraid to ask!***