

RULES FOR ALL EXHIBITORS

IMPORTANT NOTICE

The Farm Show will NOT mail premium (prize) checks. If your item earned a ribbon, you probably earned a cash award. If you cannot pick up your check Saturday night or Sunday from 1 PM to 2 PM, please drop off a long (#10) self-addressed stamped envelope in the Farm Show office before or during show week.

CHECKS NOT CASHED WITHIN 60 DAYS OF THE SHOW BECOME NULL AND VOID.

1. The Board of Directors of the Butler Farm Show has the right to accept or refuse any entries.
2. All exhibitors agree to be bound by the rules and regulations of Butler Farm Show. The show management reserves the right to amend or add to these rules and regulations as its judgment may determine.
3. NO alcoholic beverages, drugs, dogs or pets permitted on the grounds. (Only registered service dogs are admitted.) Persons using alcohol or other controlled substances will be expelled from the grounds. Minors caught drinking will be prosecuted to the full extent of the law.
4. Exhibitors will comply with all directions given by a Director, Farm Show Official or any police or security officer. Failure to immediately comply with the directions will be cause for the exhibitor to be disqualified and be prohibited from entering any future Butler Farm Show exhibitions or shows.
5. All exhibits will be shown under the direction of the Butler Farm Show Board of Directors and the appointed representative or department superintendents. The Butler Farm Show reserves the right to interpret all rules and regulations governing the show and will make decisions based on interpretation of the rules as may be necessary for the proper conduct of the show. All interpretations and decisions will be final.
6. The exhibitor agrees to and shall assume all risks of injury to people and/or animals and/or damage to any property.
7. Violations of the rules or conduct contrary to the best interest of the Butler Farm Show will not be permitted. Exhibitors or others who persist in such violations or conduct will be asked to remove their exhibits and to leave the grounds. No fees or charges will be refunded and premiums will not be paid in such cases.

8. **Protests for any violation of the rules may be made to the Butler Farm Show Board of Directors by an exhibitor or their designated representative. All protests must be presented, in writing, to the Butler Farm Show Office within 24 hours of the alleged violation. A \$100.00 cash deposit must accompany all protests. Following investigation into the alleged violation, the \$100.00 deposit will be returned to the exhibitor if the protest is upheld. If the protest is denied, the \$100.00 fee is non-refundable. The decision of the Butler Farm Show Board of Directors regarding a protest shall be final and considered accepted by all exhibitors. Video footage, recorded by individuals, will not be reviewed as evidence in a protest situation.**

RULES FOR ALL EXHIBITORS (CONT.)

9. LATE ENTRIES ARE NOT ACCEPTED in any department. NO EXCUSES - NO EXCEPTIONS. Check the entry time for each department you are entering and be on time.
10. Exhibitors must have an exhibitor's number. It starts with the initial of your last name and must be included when you write your number on entries. Call the office before the show to obtain a new number or to retrieve your number from previous years. Use the same exhibitor's number for everything you enter in every department. Entries may be disqualified if the exhibitor's number, name and city are not on the tag.
11. All exhibits and exhibitors will be ready at 9:00 AM on the first day of show, except where judging is occurring.
12. Reasonable care will be taken to protect all exhibits on display from injury and damage, but the show cannot, in any way, be held responsible for accidents, loss or damage by water, fire, theft, or otherwise, whatever may be the cause or extent of the damage or loss.
13. **Exhibits and/or exhibitors leaving the show early without permission will NOT receive premium checks; they will FORFEIT all award money, and next year's participation will be at the discretion of the board.**
14. Premiums as listed may be given for meritorious exhibits. In cases where there is no competition, judges may give an award such as they deem the exhibit is worthy to receive. Same rule applies where there are fewer entries in any class than the number of premiums offered. The judges may, at their discretion, award a prize or prizes of such grade as the exhibit deserves. Placement and premium on single entries in a class will be determined by the judge.
15. The show reserves the right to determine how many entries they will accept from any exhibitor in the same class or in the same livestock species.
16. It is the responsibility of the exhibitor to present a plainly-marked entry tab showing the name of the exhibit they are entering. Any item entered improperly will be disqualified to receive a prize, but the judges will mark the correct name of the entry on the tag for the benefit of the owner. If award ribbons are stolen or destroyed, the exhibitor may receive a duplicate, free of charge, at the close of the show.
17. Committees reserve the right to refuse any entry. Furthermore, the committees reserve the right to bar from competition animals, vegetables, flowers, poultry products and home-produced articles of decidedly inferior quality and/or those not possessing sufficient merit to warrant recognition.
18. If the show management believes that any exhibits were made in previous years or not made by the exhibitor, those exhibits may be refused or disqualified.
19. The decision of the judges will be final in all cases except where mistakes, fraud, misrepresentation or collusion, not discovered at the time of judging, is proven. In that case, such person(s) as the Board of Directors may appoint will make the decision.
20. The show management may, at any time, order the removal of any exhibit or part of exhibit in bad condition, and

RULES FOR ALL EXHIBITORS (CONT.)

any article unfit to show may be excluded. Exhibits may NOT be removed at any time before the close of the show except by consent of the management. Removal of an exhibit without consent of the department superintendent will forfeit all premiums and next year's participation will be at the discretion of the board.

- 21. During the judging, buildings, except livestock arenas, are closed to everyone except fair officials, judges, and necessary attendants.** An exhibitor or his/her agent shall NOT communicate with the judge during time of determining the awards, except to answer questions proposed by the judges. Any exhibitor interfering with the judge while making awards shall forfeit any premiums to which he/she would otherwise be entitled. **Buildings for Departments 11 - 23 will be opened by approximately 4:00 on Monday.**

The Premium Book serves as a guide and is subject to change. While every effort has been made to ensure the accuracy, the Board of Directors reserves the right to add, alter or change this information as necessary.



**AND ON THE 9TH DAY,
AFTER GOD MADE A FARMER,
He looked down on His planned
paradise and decided He needed
someone to show off His prized
creations,
SO GOD MADE A FARM SHOW KID.**

He needed someone also who would get up before school, feed, exercise and groom his show animals and then do it all over again after school, in the heat, the cold, the driving rain or blowing snow.

SO GOD MADE A FARM SHOW KID.

God said, "I need someone who'll set an example for other young people, someone who'd be on the honor roll, play sports, play music, and be involved in their church."

SO GOD MADE A FARM SHOW KID.

God said, "I need someone who will set a standard, who will teach a lesson about being a humble winner and a gracious loser. Someone who will travel all night, stay up all day, and be ready for the show ring in five minutes."

SO GOD MADE A FARM SHOW KID.

God said, "I need somebody who, when asked, would shear a lamb, fit a steer, show a pig or a goat for a friend; who knows how to change a flat or back a trailer, but ask for nothing in return."

SO GOD MADE A FARM SHOW KID.

He needed somebody who'd bond a family together as parents gaze across the show ring with a laugh, a sigh and sometimes a cry. But with a smile in their eye, say, "You're just like me, doing what Mom and Dad did..."

An heir of those from whom we learned and a teacher to those yet to come." **SO GOD EXTENDED HIS GRACE TO THOSE IN 4-H AND FFA AND MADE A TRUE FARM SHOW KID.**

SPECIAL NOTICES ***for Livestock Exhibitors***

**Entry forms, camper form, FEES, and
Waivers of Liability (last page of this book)
MUST BE RECEIVED IN THE OFFICE
BY 5:00 PM, SUNDAY, JULY 14.**

**ALL LIVESTOCK, SHOWMANSHIP, LEAD
LINE & TRACTOR HANDLING CLASSES
MUST BE ENTERED BY JULY 14.**

Late or ringside entries will NOT be accepted.

Interactive entry forms for all animals, campers, and Waivers of Liability are available online at www.butlerfarmshow.com.

Download, fill out, print and mail them.

*All forms are also available at
the Extension Office or
the Farm Show Office (724-482-4000).*

**Entry forms for *CAMPERS, EQUINES,
MARKET ANIMALS, BREED SHEEP/SWINE and
RABBITS* are provided in this book.**

*Carefully read the Rules for All Exhibitors,
the Rules for Livestock Exhibitors,
the Guidelines for Care of Animals, the
PA State and National Code of Show Ring Ethics,
and additional rules for the Butler Farm Show on
the following pages.*

Rules have been changed and/or added.

*Know what is expected and
what you are doing!*

**Keep all animals off the midways.
Use the back way to move your animals to
the livestock barn for the sale on Thursday.
If you decide not to bring any animal,
please notify the office.**

OVERNIGHT PERMISSION FORMS

ALL EXHIBITORS under the age of 18 staying on the grounds between midnight and 5:00 AM **MUST HAVE** a signed parental/guardian permission form, on file in the office and **MUST CARRY** an official card issued by the show secretary. If the parents/guardians are not staying, another adult must be designated as chaperone, The card may be obtained before the show or on the Monday of show week. (Form on page 190 in this book.)

CHECK LIST

To help you prepare for the show,
please read this important information.

Call your VET to do a health check and complete the CERTIFICATE OF VETERINARY INSPECTION (CVI) AFTER MAY 1. You must bring a paper copy of the CVI with your animals on Sunday for check in. Read carefully the health rules for each species. Consult your vet if you have any questions.

EARTAG PICK UP is May 4 for market goats, sheep and pigs. Forms and pictures must be returned to the Extension Office by May 13.

DESIGNATION FORMS for all breeding stock must be in the **EXTENSION OFFICE** by **Monday, June 3**. "Pending" registration numbers must be filled in by July 17.

CHEESE AUCTION FORMS due **Monday, June 3**.

FARM SHOW ENTRY FORM, WAIVER OF LIABILITY FORM (page 203), **OVERNIGHT PERMISSION FORM** (page 190) and **CAMPER FORMS** (Page 191) due at the **FARM SHOW OFFICE** on July 14 of each year.

All **ENTRY FORMS** are available online for you to download, fill out and mail to the Farm Show Office. Equines, Breed Sheep/Swine, Market Animal, and Rabbit Entry Forms are available in the back of this book. Alpacas may use the Market Animal form. Separate forms are used for Poultry, Cattle and Goats.

CAMPERS may be parked after 5:00 PM on Thursday, August 1, and Friday, August 2. A camping spot and/or hang tag does NOT entitle you to pull in and park at your camper.

All **PROJECT BOOKS** (Up to date to July 31) must accompany the animal to the Farm Show.

HORSES, DAIRY CATTLE, BEEF CATTLE, SHEEP, SWINE, and **GOATS** and project books will be checked before unloading.

In order to show or enter anything at the Farm Show, you must have an **EXHIBITOR'S NUMBER**. This is easily obtained by calling the Farm Show office after July 1st.

ENTRY TAGS for any items you are entering may be picked up in the Farm Show Office starting July 1.

Did you do the following?

- Fill out completely the appropriate entry forms
- Sign the back of entry forms
- Supply the name and phone number of your vet
- Enclose payment for all entries
- Use a separate entry form for each exhibitor / department / section.
- Make copies of your entries for show week use
- Send your forms to the office by July 14.

RULES AND REGULATIONS FOR LIVESTOCK EXHIBITORS

NEW IN 2019

OVERWEIGHT/UNDERWEIGHT MARKET CLASSES ARE NO LONGER OFFERED. MARKET ANIMALS MUST MEET THE WEIGHT RESTRICTIONS SPECIFIED IN THE LIVESTOCK SALE RULES.

ALL LIVESTOCK (INCLUDING DAIRY CATTLE & GOATS) WILL BE HEALTH CHECKED BY A VET BEFORE UNLOADING.

IMPORTANT NOTICE

The Farm Show will NOT mail premium checks.

If you cannot pick up your check Saturday night or Sunday from 1 PM to 2 PM, please drop off a long (#10) self-addressed stamped envelope in the Farm Show office before or during show week.

CHECKS NOT CASHED WITHIN 60 DAYS OF THE SHOW BECOME NULL AND VOID.

HANG TAGS MUST BE VISIBLY DISPLAYED IN VEHICLES PARKED INSIDE THE GROUNDS OR THEY MAY BE TOWED.

**ATTENTION EXHIBITORS:
DO NOT USE SCREWS, STAPLES, NAILS, OR HARDWARE OF ANY TYPE ON THE TENT POLES.**

1. Refer to Rules for All Exhibitors on the previous pages.
2. Health Requirements for each species are listed in the respective departments. Animals will NOT BE ADMITTED to the Farm Show unless the health requirements have been fulfilled. **Must present a paper copy of CVI.**
3. The Farm Show reserves the right to reject entries.
4. Entry fees and camper fees are refundable at the discretion of the Board of Directors.
5. Checks for entry and/or camper fees that are returned to the Farm Show for insufficient funds will be subject to an additional fee of \$50.
6. Entry fees are collected for all OPEN show livestock, no matter the age of the animal.
7. Open exhibitors are limited to two paid entries per class per exhibitor.
8. The department superintendents have the final judgment in resolving any and all disputes.
9. **All market animals must meet weight restrictions to show and sell. Overweight / underweight animals must be removed from the grounds immediately following weigh-in. Overweight/underweight classes are no longer offered. EXCEPTION: An animal not meeting weight restrictions may remain on the grounds IF it is the ONLY animal the exhibitor has for showmanship.**
10. The Guidelines for Care of Animals and the PA Code of Show Ring Ethics with Butler Farm Show Additions as printed on the following pages must be followed. The board of directors reserves the right to disqualify an entry, disqualify an entry and remove it from the grounds, and/or reject entries for next year.

RULES FOR ALL LIVESTOCK EXHIBITORS (CONT.)

11. Violations of the rules or conduct contrary to the best interest of the Butler Farm Show will not be permitted. Exhibitors or others who persist in such violations or conduct will be asked to remove their exhibits and to leave the grounds. No fees or charges will be refunded and premiums will not be paid in such cases.
12. **Protests for any violation of the rules may be made to the Butler Farm Show Board of Directors by an exhibitor or their designated representative. All protests must be presented, in writing, to the Butler Farm Show Office within 24 hours of the alleged violation. A \$100.00 cash deposit must accompany all protests. Following investigation into the alleged violation, the \$100.00 deposit will be returned to the exhibitor if the protest is upheld. If the protest is denied, the \$100.00 fee is non-refundable. The decision of the Butler Farm Show Board of Directors regarding a protest shall be final and considered accepted by all exhibitors. Video footage, recorded by individuals, will NOT be reviewed as evidence in a protest situation.**
13. The Livestock Committee or a designated representative is responsible for checking the health of all animals upon arrival and all Certificates of Veterinary Inspection (paper copy). Any animal displaying any evidence of transmissible diseases will be removed from the show.
14. ALL LIVESTOCK ENTRIES must have proper identification (microchip, ear tag, legible tattoo, or ear notch). Identification numbers on registration papers, health papers, tattoos and/or eartags must match. Breeding BEEF and SHEEP health, registration and identification papers will be checked before unloading.
15. ALL MARKET BEEF AND LAMBS must be slick sheared (1/4" maximum hair length) BEFORE arriving at the show and unloading on Sunday. Leg and head (except ears) hair/wool are NOT permitted. Animals will be checked before they are unloaded Sunday. The decision of the slick-shear committee is FINAL. Swine are not slick sheared but may be clipped.
16. ALL BEEF, SHEEP and SWINE (MARKET AND BREEDING) will NOT be accepted before 9:00 AM on Sunday, August 4; they must be in the stalls/barns by 3:00 PM that day.
17. ALL BEEF, SHEEP and SWINE (MARKET AND BREEDING) must enter thru the Meridian Road (Gate 3) camper gate and be health checked and market animals slick-sheared checked before unloading. Hogs will be brought to the back door of the livestock building, checked and weighed in as they are unloaded
18. ALL BEEF, SHEEP and SWINE (MARKET AND BREEDING) must remain until 9:00 PM, Saturday, August 10. Other animals must remain until times stated in the respective departments. Anyone removing exhibits before 9:00 PM without permission will forfeit their premiums and next year's participation will be at the discretion of the Board.
19. Exhibitors are expected to display their animals as directed by the committee; accept the stall assignment

RULES FOR ALL LIVESTOCK EXHIBITORS (CONT.)

without controversy; keep their animals in an attractive appearance; and cooperate in every way that may serve to increase the educational value of the show.

20. Exhibitors are required to provide their own feed and bedding.
21. **Exhibitors are responsible for the care of all animals including, but not limited to, the cleanliness of pens, cleanliness of animals, and providing feed and water at all times until 9:00 PM Saturday or until animals are removed from the grounds. Exhibitors will be required to maintain their respective areas in a clean and orderly condition, on a daily basis, for the duration of the Butler Farm Show. Animal exhibits must be cleaned by 10:00 AM each morning in preparation for visitors.** The Butler Farm Show Board of Directors will assign custodial personnel to clean disorderly exhibit areas. A minimum charge of \$25.00 for each occurrence plus the cost of bedding and/or supplies will be made for such service. Exhibitors found in violation will receive one warning. If the exhibitor fails to correct the situation, the Butler Farm Show Board will have the exhibit area cleaned and the exhibitor will be charged for the service. Repeated violations and/or failure to pay the cleaning charge may result in refusal to exhibit at future shows.
22. The show superintendents may, AT ANY TIME, order the removal from the show grounds of any animal of unthrifty nature, unsuitable condition, or which cannot be satisfactorily handled under show conditions.
23. Animals with horns will NOT be shown or displayed at the Butler Farm Show, except for breeding stock of horned breeds of any species. Market animals must follow the Livestock Sale Rules.
24. All livestock entries and fees must be submitted by July 14. All livestock, including poultry and rabbits, exhibitors MUST include a WAIVER OF LIABILITY Form (in the back of this book) with the entry form and fees. EQUINE EXHIBITORS MUST SUBMIT A CERTIFICATE OF LIABILITY INSURANCE.
25. Equines, dairy cattle, beef cattle, goats, sheep, and swine shown in registered breeding classes must be REGISTERED purebred animals (except as specified in Junior Departments). Registration papers must be OFFICIALLY TRANSFERRED into the exhibitor's name 30 days prior to the show unless otherwise specified by the department. i.e. Rabbits must be owned 60 days prior to this year's show. Original registration papers (not copies) will be checked by the Farm Show committee or designated representative. SIGNED TRANSFERS WILL NOT BE ACCEPTED. Animals shall be identified as specified by the breed or registry association. Sheep must wear the ear tags of their respective registry association. All animals registered in associations requiring tattoos must have legible tattoos. Any leased animal must have a notarized lease or contract from the original owner.
26. SPECIAL RULE FOR GOATS: Owners must submit a copy of registration papers with the entry form.
27. All animals entered in group classes MUST be REGISTERED IN THE SAME BREED.

RULES FOR ALL LIVESTOCK EXHIBITORS (CONT.)

28. Coaching or assistance from the sidelines is NOT allowed during ANY show, including showmanship, market and breed shows.
29. Interference with judges/judging WILL NOT BE TOLERATED. Interfering exhibitors, including immediate family members, will be barred from competition. The only people ALLOWED in the ring during judging are the judge, breed chairman, and necessary attendants.
30. **Exhibitors with disabilities are encouraged to participate in the Butler Farm Show. If the exhibitor anticipates needing any type of accommodations, you must check the box requesting accommodation on the Butler Farm Show entry form.**
 - **Individuals with disabilities who require assistance to exhibit their animal(s) may designate an individual to provide assistance. If the animal(s) is a 4-H or FFA project animal, the assistant must be a Butler County 4-H or FFA member. It is the responsibility of the family of an exhibitor with a disability requiring assistance to identify an individual who is best able to provide assistance regardless of the age of the exhibitor. The name of the Butler County 4-H or FFA member providing assistance must be designated on the entry form.**
 - **In the event that a 4-H or FFA member has more than one animal in a class, is injured, or due to extenuating circumstances is unable to exhibit their project animal(s), the family may designate a substitute Butler County 4-H or FFA member to show the animal(s). In the event of an injury or extenuating circumstances, the exhibitor must make arrangements for a substitute exhibitor with the show superintendent prior to the day of show. The substitute exhibitor must be an immediate family member that is a Butler County 4-H or FFA member or a Butler County 4-H or FFA member the same age as the project member. Immediate family is defined as brother, sister, step-brother, step-sister, or bona fide foster child living in the same household.**
 - **During the show, decisions regarding exhibitor accommodation will be made by a member of the Butler Farm Show Board of Directors and/or the show superintendent.**
31. Exhibitors are responsible for knowing when their animals will be judged. Stock must be in the ring promptly when called. Late entries will not be allowed to enter the ring and will be out of competition. Decorations with ribbons or ornaments previously won by animals are prohibited until after the awards have been made in their respective classes by the judges.
32. All animals are required to be tied or penned and under control of the exhibitor when being shown or paraded.
33. **DRENCHING, FORCE OR BOTTLE FEEDING OF ANY ANIMALS, OR USE OF ICING AND/OR ANY TEMPERATURE-ALTERING PRODUCTS WILL RESULT IN DISQUALIFICATION OF THE EXHIBITOR. (EXCEPTION: SWINE EXHIBITORS ARE EXEMPT FROM COOLING PRACTICES FOR PURPOSES OF SWINE COMFORT.)**

RULES FOR ALL LIVESTOCK EXHIBITORS (CONT.)

34. BEEF BREEDING AND MARKET CATTLE: FITTING IS NOT PERMITTED. Any artificial means used to change the form or shape of an animal (i.e. adhesives, paint, etc.) will disqualify it from competition. WASHING, CLIPPING AND BLOW DRYING ARE PERMITTED AND ENCOURAGED.
35. Use only grooming products that are approved for use on dairy animals when fitting your animals for show. Unapproved products may contain ingredients that result in unacceptable residues in the milk. If you are not certain that a product is residue safe and approved for use on dairy animals, do not use it!
36. Should any animal awarded a prize be disqualified, the animals earning the lower prizes will move into the next higher position if, in the opinion of the judges, the animals are worthy of such prizes.
37. Every exhibit accepted for premiums must be clearly labeled. The breed name must be shown on cards large enough to be readily identified by the viewers, or if the livestock is grouped together according to breed, one large sign to designate the group will be satisfactory. However, the award ribbons must be placed on the stall or pen of the individual winners for the duration of the show. Failure to comply with this regulation will result in forfeiture of premiums. It will be the duty of the show officials to see that this regulation is followed. If award ribbons are stolen or destroyed, the exhibitor may receive a duplicate, free of charge, at the close of the show.

The Premium Book serves as a guide and is subject to change. While every effort has been made to ensure the accuracy, the Board of Directors reserves the right to add, alter or change this information as necessary.

**ANIMAL HEALTH REGULATIONS
IMPORTANT:**

***ALL ANIMALS AND HEALTH PAPERS
MUST BE CHECKED BEFORE UNLOADING.***

All animals admitted to the Farm Show will be subject to inspection by show officials and will be rejected if evidence of infectious, contagious or parasitic disease is apparent or if health certification or identification documentation is not acceptable. The animals must comply with applicable state (7PA Code) or federal (9CFR) rules.

Animals known to be infected with any such diseases and animals restricted by quarantine may not be shown or displayed.

All show animals returning home from shows should be isolated from other members of the herd or flock for 30 days to help prevent the spread of disease.

**HEALTH REQUIREMENTS FOR EACH SPECIES
ARE LISTED IN THEIR RESPECTIVE DEPARTMENTS.**

**Out-of-state exhibitors should contact
the Farm Show Office or
the PA State Dept. of Agriculture
for additional health rules.**

GUIDELINES FOR CARE OF ANIMALS

BUTLER FARM SHOW EXHIBITORS ARE EXPECTED AND REQUIRED TO CARE FOR ANIMALS IN A MANNER THAT IS RESPONSIBLE AND ETHICAL. THE BOARD OF DIRECTORS RESERVES THE RIGHT TO DISQUALIFY AN ENTRY, DISQUALIFY AN ENTRY AND REMOVE IT FROM THE GROUNDS, AND/OR REJECT ENTRIES FOR NEXT YEAR IF THESE GUIDELINES ARE NOT FOLLOWED.

1. RESTRAINING ANIMALS

- a. Animals should be tied or penned in a manner that will not hurt the animal or restrict its breathing in any way.
- b. Animals should be tied so that all four feet are firmly on the ground and they have enough room to stand comfortably and lie down.
- c. Animals should be tied so that they are not able to injure animals tied near them.
- d. Animals unaccustomed to each other should not be penned together.

2. HANDLING

Any type of rough handling, such as punching or kicking, which could harm an animal is prohibited. The use of whips, canes, and show sticks should be restricted to showing only and then be used only to guide the animals, not punish them. Remember, animals will respond quicker and better to quiet, gentle handling, than loud, rough handling.

3. BEDDING

All animals should have bedding that is dry and clean. Pens should be regularly cleaned throughout the day to keep the animals clean and comfortable. If non-traditional bedding such as carpeting is used, it should be regularly cleaned (at least twice daily) to keep the pen free from manure.

4. FEEDING & WATER

Animals should be well-fed and have access to clean water at all times. Realizing that many market animals must have restricted amounts of feed to maintain the proper weight, animals must be fed adequate amounts of feed to meet the animal's basic requirements. Animals not allowed reasonable access to clean feed and clean water will be disqualified from the show.

5. HEALTH

It is the responsibility of the exhibitor to provide proper health care for their animals through routine inspections and consultation with health care professionals. The improper or illegal use of drugs or antibiotics is prohibited. If medication is indicated, be sure to follow the label directions and allow more than the stated withdrawal time.

6. CARE OF THE BARN AND EXHIBIT AREAS

Each exhibitor is asked to assume responsibility to keep all public areas clean and clear of animal waste for the protection of our guests. Encourage visitors to use the hand washing stations. Do not encourage petting of animals.

7. TRANSPORTATION

Animals should be transported in a way that is both safe and considerate of the animal's well-being.

8. BLANKET/SWEAT COLLARS

Any type of material such as blankets or sweat collars should be large enough to permit normal body functions such as breathing, eating, drinking or lying down.

PA STATE & NATIONAL CODE OF SHOW RING ETHICS

THE BUTLER FARM SHOW HAS ADOPTED THE PA STATE AND NATIONAL CODE OF SHOW RING ETHICS AS RULES FOR ALL ANIMALS ENTERED.

Exhibitors of animals at livestock shows shall at all times deport themselves with honesty and good sportsmanship. Their conduct in this competitive environment shall always reflect the highest standards of honor and dignity to promote the advancement of agricultural education. This code applies to junior as well as open class exhibitors who compete in structured classes of competition. This code applies to all livestock offered in any event at a livestock show. In addition to the "IAFE National Code of Show Ring Ethics," fairs and livestock shows may have rules and regulations which they impose on the local, county, state, provincial & national levels.

All youth leaders working with junior exhibitors are under an affirmative responsibility to do more than avoid improper conduct or questionable acts. Their moral values must be so certain and positive that those younger and more pliable will be influenced by their fine example. Owners, exhibitors, fitters, trainers and absolutely responsible persons who violate the code of ethics will forfeit premiums, awards and auction proceeds and shall be prohibited from future exhibition in accordance with the rules adopted by the respective fairs and livestock shows. Exhibitors who violate this code of ethics demean the integrity of all livestock exhibitors and should be prohibited from competition at all livestock shows in the United States and Canada.

The following is a list of guidelines for all exhibitors and all livestock in competitive events:

1. All exhibitors must present, upon request of fair and livestock show officials, proof of ownership, length of ownership and age of all animals entered. Misrepresentation of ownership, age, or any facts relating thereto is prohibited.
2. Owners, exhibitors, fitters, trainers or absolutely responsible persons shall provide animal health certificates from licensed veterinarians upon request by fair or livestock show officials.
3. Junior exhibitors are expected to care for and groom their animals while at fairs or livestock shows.
4. **Animals shall be presented to show events where they will enter the food chain free of drugs. The act of entering an animal in a livestock show is the giving of consent by the owner, exhibitor, fitter, trainer and/or absolutely responsible person for show management to obtain any specimens of urine, saliva, blood, or other substances from the animal to be used in testing.** Animals not entered in an event which culminates with the animal entering the food chain shall not be administered drugs other than in accordance with applicable federal, state and provincial

CODE OF SHOW RING ETHICS (CONT.)

statutes, regulations and rules. **Livestock shall not be exhibited if the drugs administered in accordance with federal, state and provincial statutes, regulations and rules affect the animal's performance or appearance at the event.**

If the laboratory report on the chemical analysis of saliva, urine, blood, or other sample taken from livestock indicates the presence of forbidden drugs or medication, this shall be prima facie evidence such substance has been administered to the animal either internally or externally. It is presumed that the sample of urine, saliva, blood, or other substance tested by the approved laboratory to which it is sent is the one taken from the animal in question, its integrity is preserved and all procedures of said collection and preservation, transfer to the laboratory and analysis of the sample are correct and accurate and the report received from the laboratory pertains to the sample taken from the animal in question and correctly reflects the condition of the animal at the time the sample was taken, with the burden on the owner, exhibitor, fitter, trainer, or absolutely responsible person to prove otherwise at any hearing in regard to the matter conducted by the fair or livestock show. At any time after an animal arrives on the fair or livestock show premises, all treatments involving the use of drugs and/or medications shall be administered by a licensed vet.

- 5. Any surgical procedure or injection of any foreign substance or drug or the external application of any substance (irritant, counterirritant, or similar substance) which could affect the animal's performance or alter its natural contour, confirmation, or appearance, except external applications of substances to the hoofs or horns of animals which affect appearance only and except for surgical procedures performed by a duly licensed veterinarian for the sole purpose of protecting the health of the animal, is prohibited.**
6. The use of showing and/or handling practices or devices such as striking animals to cause swelling, using electrical contrivance, or other similar practices are not acceptable and are prohibited.
7. Direct criticism or interference with the judge, fair or livestock show management, other exhibitors, breed representatives, or show officials before, during, or after the competitive event is prohibited. In the furtherance of their official duty, all judges, fair and livestock show management, or other show officials shall be treated with courtesy, cooperation and respect and no person shall direct abusive or threatening conduct toward them.
8. No owner, exhibitor, fitter, trainer, or absolutely responsible person shall conspire with another person or persons to intentionally violate this code of ethics or knowingly contribute or cooperate with another person or persons either by affirmative action or inaction to violate this code of ethics. Violation of this rule shall subject such individual to disciplinary action.

CODE OF SHOW RING ETHICS (CONT.)

9. The application of this code of ethics provides for absolute responsibility for an animal's condition by an owner, exhibitor, fitter, trainer, or participant whether or not he or she was actually instrumental in or had actual knowledge of the treatment of the animal in contravention of this code of ethics.
10. The act of entering an animal is the giving of consent by the owner, exhibitor, fitter, trainer, or absolutely responsible person to have any disciplinary action taken by the fair or livestock show against such individuals published in any publication of the International Association of Fairs and Expositions, including Fairs and Expositions and any special notices to members.
11. The act of entering an animal in a fair or livestock show is the giving of verification by the owner, exhibitor, fitter, trainer, or absolutely responsible person that he or she has read the "IAFE National Code of Show Ring Ethics" and understands the consequences of and penalties provided for actions prohibited by the code. It is further a consent that any action which contravenes these rules and is also in violation of federal, state, or provincial statutes, regulations, or rules may be released to appropriate law enforcement authorities with jurisdiction over such infractions.



DEPARTMENT 6 GOATS

SUPERINTENDENT - TINA BRYNER
PHONE: 724-865-2418
ASST. SUPT. - CHRISTY COOK

ENTRIES MUST BE RECEIVED ON OR BEFORE JULY 14

- AND MUST INCLUDE (1) A SIGNED ENTRY FORM,
(2) A WAIVER OF LIABILITY FORM (page 203),
(3) COPIES OF OWNERSHIP PAPERS, &
(4) ENTRY FEES (\$2.00/head). Checks returned for insufficient funds are subject to an additional \$50 fee.**
If the ownership papers are not with the entry form, the entry will NOT be accepted.

**ANY AND ALL CLASSES INCLUDING SHOWMANSHIP
MUST BE ENTERED BY JULY 14.**

Entries will not be accepted at the show.

**USE THE GOAT ENTRY FORMS AVAILABLE
ONLINE(INTERACTIVE), AT THE EXTENSION OFFICE, OR
AT THE FARM SHOW OFFICE (724-482-4000).**

**ARRIVAL: 10:30 AM - 12:30 PM, SUNDAY, AUGUST 4
ALL GOATS MUST BE HEALTH CHECKED BY THE VET
BEFORE UNLOADING.**

RELEASE TIME: 9:00 PM, SATURDAY, AUGUST 10
Exhibits and/or exhibitors leaving the show early without permission will forfeit premiums and participation in next year's show will be at the discretion of the Board.

SHOWTIME - MONDAY starting at 10:00 AM

SHOW ORDER:

MARKET GOATS

SHOWMANSHIP (Starting with Peewees)

CART GOATS (Harness Kid, Harness Yearling, Senior Harness)

DAIRY SENIOR DOES (By Breed/All Breeds)

BEST SR. DOE IN SHOW (All Sr. Bests of Breed competing)

BEST UDDER IN SHOW

DAIRY JUNIOR DOES (By Breed/All Breeds)

BEST JR. DOE IN SHOW (All Jr. Bests of Breed competing)

BOER GOATS

BEST BOER DOES IN SHOW

DAILY MILKING HOURS

6:00 - 9:00 AM 6:00 - 9:00 PM

Pre-Show Milking - Sunday 6:00 PM - 8:00PM

HEALTH REQUIREMENTS

- 1. A PAPER COPY OF THE CERTIFICATE OF VETERINARY INSPECTION (CVI) ISSUED AFTER MAY 1, 2019, AND INDIVIDUALLY IDENTIFYING ALL ANIMALS IS REQUIRED.**
- 2. All goats must be free of any evidence of infectious and contagious diseases including caseous lymphadenitis, sore mouth, active ring worm, foot rot, warts, lice and mange, and a statement of this is required on the CVI (the statement is pre-printed on the CVI). Animals appearing unhealthy upon arrival will NOT be permitted to unload.**
- 3. Individual official USDA scrapie animal identification is required for all goats.** Official scrapie ID includes
 - A USDA eartag with a US shield; OR
 - A legible tattoo with herd and individual identification recognized in an approved USDA Scrapie database

GOAT DEPARTMENT RULES & REGULATIONS (CONT.)

- a.k.a. a scrapie tattoo (only for flocks enrolled in the USDA Voluntary Scrapie Flock Certification Program); OR
- A breed registration tattoo if the animals are accompanied by a registration certificate (copy acceptable) and the tattoo is legible. (LaMancha goats are tattooed on the tail web.)
4. Animals 6 months of age and older must have the official PA Health Certificate (AAI-13) issued by the Bureau of Animal Industry in Harrisburg. All animals under 6 months of age may be shown on the dam's health papers. Health papers and animals will be checked by the superintendent or their representative prior to unloading. Any goats showing clinical signs of contagious or infectious disease, including active ring worm, warts, lice and mange, as determined by the Butler Farm Show designee will be barred from the show and not permitted to unload. THE DECISION OF THE HEALTH AGENT IS FINAL.

RULES & REGULATIONS

1. Refer to Rules & Regulations for All Exhibitors, Rules & Regulations for Livestock Exhibitors, Guidelines for Care of Animals and Show Ring Code of Ethics.
2. Unsigned or incomplete entries will be returned.
3. **Entries will NOT be accepted at ringside or after July 14. ALL classes must be pre-entered and listed on your entry form.**
4. **REGISTRATION FOR DAIRY GOATS MUST BE FROM ADGA and/or AGS. See Section 20 for registration information for Boer goats.**
5. **All ADGA and/or AGS rules apply to the dairy goats. NO HORNS PERMITTED ON DAIRY GOATS.**
6. **Copies of registration papers must be sent with the entry form.** A copy of the original registration certification is required for animals 6 months of age or older. For animals under 6 months of age, a copy of the original registration certificate or ADGA/AGS stamped duplicate application will be accepted. Proof of animal ownership shall be the name on the registration or on the ADGA stamped duplicate application.
7. All goats must have permanent and legible tattoos in accordance with the ADGA/AGS rules. Re-tattoos are acceptable when said tattoo matches the legible digits of the original tattoo, is in the same ear as the original tattoo, and an appropriate notification appears on the animal's registration certificate. (LaMancha goats are tattooed on the tail web.)
8. All livestock offered for premiums must be the property of the owner 30 days or longer and must be in the name of the exhibitor. An exhibitor shall not present an animal to be shown under a judge from whom it was purchased within 90 days of the show.
9. Exhibitors are limited to 3 goats per class.
10. Recorded grades must be recorded.
11. All goats shown in group classes must also be shown in individual classes and registered in the same breed.
12. Exhibitors are required to provide their own feed, pens and bedding. **Exhibitors are responsible for feeding and watering their goats daily and keeping the water and pens in a sanitary condition at all times.**
13. Breeds will be shown in order as listed.

**DEPT. 6 SECTION 40 PEEWEE SHOWMANSHIP
ENTRY & LIABILITY WAIVER
MUST BE RECEIVED BY JULY 14.
SHOWTIME - MONDAY 10:00 AM -
FOLLOWING MARKET GOAT SHOW**

*Use Goat or Market Animal entry form (in back of book.)
Ringside entries will NOT be accepted - MUST be pre-entered.*

Prizes donated by the Caprine Connection 4-H Club.

CLASS 1. PEEWEE Rosette

DEPT. 6 OPEN DAIRY GOAT CLASSES

ENTRY FEE – \$2.00 PER GOAT

**SHOW ORDER – SENIOR DOES (By Breed/All Breeds)
JUNIOR DOES (By Breed/All Breeds)**

Goat entry forms online, at office or Extension Office.

Enter by section (breed) and class number:

SECTION 1 ALPINE SECT. 5 OBERHASLI
SECT. 2 LAMANCHA SECT. 6 SAANEN
SECT. 3 NIGERIAN DWARF SECT. 7 TOGGENBURG
SECT. 4 NUBIAN SECT. 8 RECORDED GRADE

To determine the goat's age class, all dates are calculated backwards from the date of the show.

CLASS - ENTRY FEE \$2.00/GOAT 1st 2nd 3rd 4th 5th
SENIOR DOES

- | | | | | | |
|-------------------------------------|---------|------|------|------|------|
| 1. YEARLING MILKER, 12-24 mos... | \$12. | \$8. | \$6. | \$5. | \$4. |
| 2. MILKING DOE, 2 yrs. | \$12. | \$8. | \$6. | \$5. | \$4. |
| 3. MILKING DOE, 3 yrs. & 4 yrs..... | \$12. | \$8. | \$6. | \$5. | \$4. |
| 4. MILKING DOE, 5 yrs. & over | \$12. | \$8. | \$6. | \$5. | \$4. |
| 5. SENIOR BEST OF BREED | Rosette | | | | |
| 6. RESERVE SR. BEST OF BREED | Rosette | | | | |
| 7. BEST UDDER BY BREED | \$12. | \$8. | \$6. | \$5. | \$4. |
| 8. DAM(IN MILK) & DAUGHTER | \$12. | \$8. | \$6. | \$5. | \$4. |
| 9. SR. GET-OF-SIRE | \$12. | \$8. | \$6. | \$5. | \$4. |

3 does from the same sire (but at least 2 different dams) that have freshened and already shown in individual classes. Need not be owned by exhibitor.

Name the sire on the entry form.

- | | | | | | |
|--------------------------|-------|------|------|------|------|
| 10. PRODUCE OF DAM | \$12. | \$8. | \$6. | \$5. | \$4. |
|--------------------------|-------|------|------|------|------|

2 does of different ages from the same dam but 2 different sires, already shown in individual classes. Need not be owned by exhibitor.

Name the dam on the entry form.

JUNIOR DOES

- | | | | | | |
|-------------------------------------|---------|------|------|------|------|
| 11. JUNIOR DOE KID, birth-4 mos.... | \$12. | \$8. | \$6. | \$5. | \$4. |
| 12. SENIOR DOE KID, 5 - 7 mos..... | \$12. | \$8. | \$6. | \$5. | \$4. |
| 13. JUNIOR YEARLING DOE, | \$12. | \$8. | \$6. | \$5. | \$4. |
| 8 thru 11 months (not in milk) | | | | | |
| 14. SENIOR YEARLING DOE, | \$12. | \$8. | \$6. | \$5. | \$4. |
| 12 thru 23 months (not in milk) | | | | | |
| 15. JUNIOR BEST OF BREED | Rosette | | | | |
| 16. RESERVE JR. BEST OF BREED | Rosette | | | | |
| 17. JR. GET-OF-SIRE | \$12. | \$8. | \$6. | \$5. | \$4. |

3 does from the same sire, at least 2 different dams, with not more than 1 under 1 year old and not more than 1 from every multiple birth. Already shown in individual classes. Need not be owned by exhibitor.

Name the sire on the entry form.

BEST SR. DOE IN SHOW & BEST UDDER IN SHOW

(SR. BEST OF EACH BREED COMPETING)

WILL BE SELECTED AFTER THE LAST BREED SHOW IN THE SENIOR DIVISION.

BEST JR. DOE IN SHOW (JR. BEST OF EACH BREED COMPETING)

WILL BE SELECTED AFTER THE LAST BREED SHOW IN THE JUNIOR DIVISION.

DEPT. 6 SECTION 20 BOER GOATS
ENTRY FEE – \$2.00 PER GOAT
SHOWTIME - MONDAY
FOLLOWING DAIRY BREED SHOW

Goat entry forms online, at office or Extension Office.

1. Only registered animals will be shown in the Boer Goat Show. All Boer goats must be registered in the herd-book of a recognized association at least 30 days before the date of the show. Recognized associations include Int'l. BGA, ABGA, The IBGA, USBGA, and the Canadian Boer Goat Association.
2. All animals must be registered purebred, fullblood, or percentage blood Boer goats. Percentage doe classes must be 1/2 to 7/8 blood (50% to 88%). Purebred/Fullblood doe classes must be 15/16 blood (94%) and higher.
3. All other rules for goats also apply to the Boer goats.

Enter by section and class number:

CLASS - ENTRY FEE \$2.00/GOAT1st 2nd 3rd 4th 5th
PERCENTAGE BOERS (1/2 - 7/8)

SENIOR DOES (FRESHENED)

- | | | | | | |
|---|-------|---------|------|------|------|
| 1. UNDER 2 YEARS | \$12. | \$8. | \$6. | \$5. | \$4. |
| 2. 2 & UNDER 3 YEARS | \$12. | \$8. | \$6. | \$5. | \$4. |
| 3. 3 & UNDER 4 YEARS | \$12. | \$8. | \$6. | \$5. | \$4. |
| 4. 4 & UNDER 5 YEARS | \$12. | \$8. | \$6. | \$5. | \$4. |
| 5. 5 YEARS AND OLDER | \$12. | \$8. | \$6. | \$5. | \$4. |
| 6. CHAMPION % BOER SR. DOE | | Rosette | | | |
| 7. RES. CHAMPION % SR. DOE | | Rosette | | | |

YEARLING DOES (NEVER FRESHENED)

- | | | | | | |
|---|-------|---------|------|------|------|
| 8. 12 & UNDER 18 MONTHS | \$12. | \$8. | \$6. | \$5. | \$4. |
| 9. 18 & UNDER 24 MONTHS | \$12. | \$8. | \$6. | \$5. | \$4. |
| 10. CHAMPION % BOER YEARLING DOE | | Rosette | | | |
| 11. RES. CHAMPION % YEARLING | | Rosette | | | |

DOE KIDS (NEVER FRESHENED)

- | | | | | | |
|--|-------|---------|------|------|------|
| 12. BIRTH - UNDER 3 MONTHS | \$12. | \$8. | \$6. | \$5. | \$4. |
| 13. 3 & UNDER 6 MONTHS | \$12. | \$8. | \$6. | \$5. | \$4. |
| 14. 6 & UNDER 9 MONTHS | \$12. | \$8. | \$6. | \$5. | \$4. |
| 15. 9 & UNDER 12 MONTHS | \$12. | \$8. | \$6. | \$5. | \$4. |
| 16. CHAMPION % BOER DOE KID | | Rosette | | | |
| 17. RES. CHAMPION % DOE KID | | Rosette | | | |

FULLBLOOD/PUREBRED (94% OR +)

SENIOR DOES (FRESHENED)

- | | | | | | |
|--|-------|---------|------|------|------|
| 18. UNDER 2 YEARS | \$12. | \$8. | \$6. | \$5. | \$4. |
| 19. 2 & UNDER 3 YEARS | \$12. | \$8. | \$6. | \$5. | \$4. |
| 20. 3 & UNDER 4 YEARS | \$12. | \$8. | \$6. | \$5. | \$4. |
| 21. 4 & UNDER 5 YEARS | \$12. | \$8. | \$6. | \$5. | \$4. |
| 22. 5 YEARS & OLDER | \$12. | \$8. | \$6. | \$5. | \$4. |
| 23. CHAMPION FB/PB BOER SR. DOE | | Rosette | | | |
| 24. RES. CHAMPION FB/PB SR. DOE | | Rosette | | | |

YEARLING DOES (NEVER FRESHENED)

- | | | | | | |
|---|-------|---------|------|------|------|
| 25. 12 & UNDER 18 MONTHS | \$12. | \$8. | \$6. | \$5. | \$4. |
| 26. 18 & UNDER 24 MONTHS | \$12. | \$8. | \$6. | \$5. | \$4. |
| 27. CHAMPION FB/PB BOER YEARLING | | Rosette | | | |
| 28. RES. CHAMPION FB/PB YEARLING | | Rosette | | | |

DOE KIDS (NEVER FRESHENED)

- | | | | | | |
|--|-------|---------|------|------|------|
| 29. BIRTH - UNDER 3 MONTHS | \$12. | \$8. | \$6. | \$5. | \$4. |
| 30. 3 & UNDER 6 MONTHS | \$12. | \$8. | \$6. | \$5. | \$4. |
| 31. 6 & UNDER 9 MONTHS | \$12. | \$8. | \$6. | \$5. | \$4. |
| 32. 9 & UNDER 12 MONTHS | \$12. | \$8. | \$6. | \$5. | \$4. |
| 33. CHAMPION FB/PB BOER DOE KID | | Rosette | | | |
| 34. RES. CHAMPION FB/PB DOE KID | | Rosette | | | |

*BEST SR. BOER DOE AND BEST JR. BOER DOE
WILL BE SELECTED AT THE END OF THE SHOW.*

RULES AND REGULATIONS FOR ALL JUNIOR SHOWS

**Interactive entry forms available online.
Download, fill in, print and mail.**

**Check out the
SUPREME SHOWMAN CONTEST
(Dept. 10, Section 1, Page 91)
and the TRACTOR HANDLING CONTEST
(Dept. 10, Section 22, Page 93).**

OVERWEIGHT/UNDERWEIGHT CLASSES ARE NO LONGER OFFERED.

Eligibility: 4-H Club members must be between 8 and 18 by January 1 of the current year. Exhibitors must be 4-H members, carrying a project in the field in which they wish to make entry, and be under the supervision of the Penn State University Cooperative Extension Service by June 1 preceding the Farm Show.

Students enrolled in an accepted vocational school curriculum must be conducting a project in the class in which they wish to make entry. Students enrolled in general home economics in a comprehensive high school are considered as qualifying. All entries shall be approved prior to the fair by a member of the PA Department of Education, Agriculture or Home Economics staff or their designated representative.

NOTE: A valid 4-H project not listed in the Farm Show Book may be accepted upon approval of Farm Show and Extension service. (Animal projects not listed cannot be accommodated.)

1. To enter 4-H and FFA departments, the exhibitor must be enrolled and carry projects in the Butler County 4-H program or a Butler County FFA Chapter.
2. **ENTRIES MUST BE RECEIVED BY JULY 14. SUBMIT A SEPARATE ENTRY FORM FOR EACH SPECIES FOR EACH EXHIBITOR.** The OPEN classes for dairy, beef, sheep, goats, poultry and rabbits may be entered on the same entry form as 4-H, but you must include the required entry fees. Entry fees ARE NOT charged for Dept. 10.
3. A project designation form must be submitted to the Butler Co. Extension Office by June 1 of the current year. Entries are checked by an Extension Educator.
4. Exhibitors must have an exhibitor's number. Call the office before the show to obtain a new number or retrieve your number from previous years.
5. The Rules & Regulations for All Exhibitors, Rules & Regulations for Livestock Exhibitors, Guidelines for Care of Animals, the PA and National Show Ring Ethics with Butler Farm Show Additions as printed in the front of this book and the Junior Livestock Sale Rules on the next pages must be followed. The Board of Directors reserves the right to disqualify an entry, disqualify an entry AND remove it from the grounds, AND/OR reject entries for next year.
6. **RULES AND REGULATIONS GOVERNING OPEN CLASSES WILL APPLY IN JUNIOR SHOW CLASSES.**
7. All Junior Show animals must comply with Farm Show Health Requirements. (See respective Open Departments) Animals displaying any evidence of transmissible diseases will be removed from the show.

JUNIOR SHOW RULES & REGULATIONS (CONT.)

8. Protests for any violation of the rules may be made to the Butler Farm Show Board of Directors by an exhibitor or their designated representative. All protests must be presented, in writing, to the Butler Farm Show Office within 24 hours of the alleged violation. A \$100.00 cash deposit must accompany all protests. Following investigation into the alleged violation, the \$100.00 deposit will be returned to the exhibitor if the protest is upheld. If the protest is denied, the \$100.00 fee is non-refundable. The decision of the Butler Farm Show Board of Directors regarding a protest shall be final and considered accepted by all exhibitors. Video footage, recorded by individuals, will not be reviewed as evidence in a protest situation.

- 9. Exhibitors with disabilities are encouraged to participate in the Butler Farm Show. If the exhibitor anticipates needing any type of accommodations, you must check the box requesting accommodation on the Butler Farm Show entry form.**
- **Individuals with disabilities that require assistance to exhibit their animal(s) may designate an individual to provide assistance. If the animal(s) is a 4-H or FFA project animal, the assistant must be a Butler County 4-H or FFA member. It is the responsibility of the family of an exhibitor with a disability requiring assistance to identify an individual that is best able to provide assistance regardless of the age of the exhibitor. The name of the Butler County 4-H or FFA member providing assistance must be designated on the entry form.**
 - **In the event that a 4-H or FFA member has more than one animal in a class, is injured, or due to extenuating circumstances is unable to exhibit their project animal(s), the family may designate a substitute Butler County 4-H or FFA member to show the animal(s). In the event of an injury or extenuating circumstances, the exhibitor must make arrangements for a substitute exhibitor with the show superintendent prior to the day of show. The substitute exhibitor must be an immediate family member that is a Butler County 4-H or FFA member or a Butler County 4-H or FFA member the same age as the project member. Immediate family is defined as brother, sister, step-brother, step-sister, or bona fide foster child living in the same household.**
 - **During the show, decisions regarding exhibitor accommodation will be made by a member of the Butler Farm Show Board of Directors and/or the show superintendent.**

10. ALL LIVESTOCK ENTRIES must have proper identification (microchip, eartag, legible tattoo, or ear notch). Identification numbers on registration papers, health papers, tattoos and/or eartags must match. DAIRY, BEEF, SHEEP, & GOAT BREEDING ANIMALS health, registration and identification papers will be checked before unloading.
11. In the DAIRY SHOW an exhibitor may enter up to 5 project animals but no more than 3 in any one class.
12. ALPACAS must be in pens by 8 AM Monday and remain throughout the show.
13. ALL MARKET BEEF AND LAMBS must be slick sheared (1/4" maximum hair length) BEFORE arriving at the show and unloading on Sunday. Leg and head (except ears)

JUNIOR SHOW RULES & REGULATIONS (CONT.)

hair/wool are NOT permitted. Animals will be checked before they are unloaded Sunday. The decision of the slick-shear committee is final. NOTE: SWINE are NOT slick sheared but can be clipped.

14. ALL BEEF, SWINE, SHEEP AND GOAT MARKET ANIMALS must be tagged in order to be shown in the market classes. NO EXCEPTIONS.
15. Stags are not acceptable in Junior Market classes.
16. BEEF, SHEEP and SWINE (MARKET AND BREEDING) will NOT be accepted before 9:00 AM on Sunday, August 4; they must be in the stalls/barns by 3:00 PM that day.
17. ALL BEEF, SHEEP AND SWINE (MARKET AND BREEDING) must enter thru the Meridian Road (Gate 3) camper gate and be health and slick-sheared checked before unloading. HOGS WILL BE BROUGHT TO THE BACK DOOR OF THE LIVESTOCK BUILDING, CHECKED AND WEIGHED IN AT THAT TIME.
18. ALL BEEF, SHEEP & HOGS must remain until 9:00 PM, Saturday, August 10. Other animals must remain until times stated in the respective departments. Exhibits and/or exhibitors leaving the show early without permission will forfeit premiums and participation in next year's show will be at the discretion of the Board.

19. Exhibitors are responsible for the care of all animals including, but not limited to, the cleanliness of pens, cleanliness of animals, and providing feed and water at all times until 9:00 PM Saturday or until animals are removed from the grounds. Exhibitors will be required to maintain their respective areas in a clean and orderly condition, on a daily basis, for the duration of the Butler Farm Show. Animal exhibits must be cleaned by 10:00 a.m. each morning in preparation for visitors. The Butler Farm Show Board of Directors will assign custodial personnel to clean disorderly exhibit areas. A minimum charge of \$25.00 for each occurrence plus the cost of bedding and/or supplies will be made for such service. Exhibitors found in violation will receive one warning. If the exhibitor fails to correct the situation, the Butler Farm Show board will have the exhibit area cleaned and the exhibitor will be charged for the service. Repeated violations and/or failure to pay the cleaning charge may result in refusal to exhibit at future shows.

20. Exhibitors are required to provide their own feed, bedding and equipment.
21. Wet steers or lambs will not be weighed.
22. All market animals of same species will be weighed on the same scale.
23. **All market animals must meet weight restrictions to show and sell. Overweight / underweight animals must be removed from the grounds immediately following weigh-in. Overweight/underweight classes are no longer offered. EXCEPTION: An animal not meeting weight restrictions may remain on the grounds IF it is the ONLY animal the exhibitor has for showmanship.**
24. The show superintendents may, at any time, order the removal from the show grounds of any animal of unthrifty nature, unsuitable condition, or which cannot be satisfactorily handled under show conditions.

JUNIOR SHOW RULES & REGULATIONS (CONT.)

25. All animals are required to be tied or penned and under control of the exhibitor when being shown or paraded.
26. All exhibitors under the age of 18 staying on the grounds between the hours of 12 midnight and 5:00 a.m. must have a signed parental permission form designating another adult as a chaperone on file in the office and must carry an official card issued by the show secretary. Permission form may be found on page 184 and may be sent in with your entries. The card may be obtained before the show or on Monday of show week.

27. IMPORTANT: Appropriate show apparel for exhibitors showing Junior Market Livestock consists of clean long pants or a dress/skirt below the knees; dress shirt, buttoned appropriately, with sleeves; or a 4-H/FFA T-shirt. Hard-soled shoes or boots are required. Shirts with commercial (including farm) logos are not permitted. Inappropriate apparel includes, but is not limited to, other T-shirts, bare midriff shirts, tank tops, baggy or cut-off pants, shorts, hats, and sandals. Failure to wear appropriate show apparel may result in disqualification of the entry being shown.

28. For showmanship classes, 4-H and FFA members must show an animal that is owned/leased by that individual and designated as his/her project.

29. DRENCHING, FORCE OR BOTTLE FEEDING OF ANY ANIMALS, OR USE OF ICING AND/OR ANY TEMPERATURE-ALTERING PRODUCTS WILL RESULT IN DISQUALIFICATION OF THE EXHIBITOR. (EXCEPTION: SWINE EXHIBITORS ARE EXEMPT FROM COOLING PRACTICES FOR PURPOSES OF SWINE COMFORT.)

30. Fitting of all Youth Show animals, while at the Butler Farm Show, must be done by the exhibitor only. Butler County 4-H, FFA members and parents may provide assistance. Absolutely NO professional fitters are permitted to assist 4-H or FFA exhibitors with the junior (youth) show animals. NO EXCEPTIONS.
31. BEEF BREEDING AND MARKET CATTLE: FITTING IS NOT PERMITTED. Any artificial means used to change the form or shape of an animal (i.e. adhesives, paint, etc.) will disqualify it from competition. WASHING, CLIPPING and BLOW DRYING ARE PERMITTED AND ENCOURAGED.
32. Coaching or assistance from the sidelines is NOT allowed during ANY Show, including showmanship, market and breed shows.
33. Interference with judges/judging will not be tolerated. Interfering exhibitors, including immediate family members, will be barred from competition. The only people ALLOWED in the ring during judging are the judge, breed chairman, and necessary attendants.
34. Use only grooming products that are approved for use on DAIRY ANIMALS when fitting your animals for show. Unapproved products may contain ingredients that result in unacceptable residues in the milk. If you are not certain that a product is residue safe and approved for use on dairy animals, do not use it!
35. **If any of these rules are not followed, the animal will be disqualified. The Board of Directors reserves the right to disqualify an entry, disqualify an entry AND remove it from the grounds, and/or reject entries for next year.**

JUNIOR SHOW RULES & REGULATIONS (CONT.)

In addition to the PA State and National Code of Show Ring Ethics on pages 33-36, the following rules regarding Drug and Foreign Substance testing will apply to the Butler Farm Show.

- 1. All animals entered may be subject to random drug testing. Entering an animal in the Butler Farm Show is the giving of consent by the owner, exhibitor, and/or their designated representative for show management to obtain any specimens of urine, saliva, blood, or other substances from the animal to be used in testing. Giving of consent for testing releases the Butler Farm Show, its representatives, and the attending veterinarian from liability for any issues that may, while unlikely, result from obtaining samples for testing.**
- 2. Refusal to submit to testing of urine, saliva, blood, or other substances as requested will be interpreted as prima facie evidence of guilt.**
- 3. Animals consigned for slaughter during or immediately following the show shall not receive any treatment with drugs or biologics within the withdrawal time prior to slaughter. Withdrawal times for drugs and biologics are all stated on the directions for use. Label directions must be followed at all times.**
- 4. If upon slaughter, treatment with drugs, biologics, or any chemical from fitting products, results in the condemnation of a carcass, the loss of the carcass and any other monetary damages will be borne by the exhibitor.**
- 5. In the event an exhibitor is found guilty of the use and/or misuse of drugs, biologics, or any chemical as a result of drug testing and/or condemnation of a carcass, the exhibitor will be suspended from the Butler Farm Show for a period of time to be determined by the Butler Farm Show Board of Directors. In addition, 4-H and/or FFA policies regarding conduct of an exhibitor will be implemented. All prizes, awards, and Jr Livestock Sale proceeds received will be forfeited. If the animal in question has been processed, the exhibitor will not be permitted to claim the carcass and it will be disposed of in an appropriate manner. In the event of a positive drug test, the exhibitor will be responsible for the cost of the test and associated expenses.**
- 6. Animals not entered in an event which culminates with the animal entering the food chain shall not be administered drugs other than in accordance with applicable federal, state and provincial statutes, regulations and rules. Livestock shall not be**

JUNIOR SHOW RULES & REGULATIONS (CONT.)

exhibited if the drugs administered in accordance with federal, state and provincial statutes, regulations and rules affect the animal's performance or appearance at the event.

7. Any surgical procedure or injection of any foreign substance or drug or the external application of any substance (irritant, counter-irritant, or similar substance) which could affect the animal's performance or alter its natural contour, confirmation, or appearance and except for surgical procedures performed by a duly licensed veterinarian for the sole purpose of protecting the health of the animal, is prohibited.
8. Exhibitors that have animals that are being treated in accordance with applicable federal, state, provincial statutes, and regulations must provide documentation that the animal is under the care of a veterinarian and that any treatment must be therapeutic and necessary for the welfare of the animal. Exhibitors must provide, at check-in, a written, signed statement from a veterinarian with a diagnosis and reason for administration. The statement must identify the medication, strength, dosage, mode of administration, date and time of administration, and withdrawal requirements for animals that are entering the food chain. The statement must also include contact information for the veterinarian issuing the statement.

AUCTIONS

Have you ever attended a real, live auction?
Here are 4 chances to enjoy the
experience and fun of a bidding sale.

BAKED GOODS AUCTION

MONDAY, AUGUST 5, AT 7:00 PM

in the Dairy Pavilion

BUY THE BEST THAT BUTLER COUNTY BRINGS!

CHEESE AUCTION

WEDNESDAY, AUGUST 7, AT 8:00 PM

in the Dairy Pavilion

CHOICE CHEESE FROM CONTENTED COWS!



ANNUAL JUNIOR LIVESTOCK SALE

THURSDAY, AUGUST 8, AT 6:00 PM

(Opening Ceremonies start at 5:30)
in the Livestock Barn



FEED YOUR FAMILY; FILL YOUR FREEZER!

**Charity Animal, Goats, Lambs, Rabbits, Beef,
Poultry, & Hogs**

ANNUAL 4-H BENEFIT AUCTION

SATURDAY, OCTOBER 19, AT 6:00 PM

at the East Butler Fire Hall.

NEW FOR 2019
ULTRASOUND DEMONSTRATION

SCANNING: SUNDAY 7:00 PM (after weigh in)
RESULTS: FRIDAY 11:00 AM in Livestock Barn

In place of the master showmanship contest this year, the Butler Farm Show will provide an ultrasound demonstration. Ultrasound scans identify back fat thickness, loin eye area, or rib eye area and marbling scores. This data can then be utilized with current market prices to determine the actual value of each animal if they were sold on the rail. Carcass ultrasound is an economical way producers can make genetic improvements in carcass traits, which will, in turn, put profits in their pockets.

Sunday evening scans or photographs will be taken using an ultrasound machine of 5 pre-selected animals from each market species (goat, lamb, swine and beef). These scans will then be evaluated and measured. The measurements and scores will be shared Friday morning when master showmanship would normally be held. Depending on feedback, this may become a competitive event. Results will be surprising. The fattest may not be the best.

DEPT. 10 SECTION 22
TRACTOR HANDLING CONTEST
SUPTS. - KEN MCANALLEN, KEN METRICK

SHOWTIME - THURSDAY AT 9:00 AM

******An entry on any official Farm Show entry form must be RECEIVED ON OR BY JULY 14.******

CONDUCTED BY BUTLER FARM SHOW DIRECTORS.
The Grand Champion Tractor Handler will receive
a trophy from Vernon-Dell Tractor Equipment.

This contest is designed to display and judge the skill and abilities necessary for safe tractor and equipment operation. These points may be checked: starting procedures, hitching and unhitching equipment, steering around and through obstacles with safe clearances, backing into a simulated shed, parking, stopping, and leaving a tractor in a safe manner. A farm equipment parts identification and a written exam may be included in the contest. New or used equipment will be provided by equipment dealers and local farmers.

RULES: Contestants must be 4-H or FFA members 14 to 18 years of age and must have had suitable tractor experience at home or in a good farming situation.

Judges reserve the right to stop anyone who shows inability to operate the tractor and equipment in order to prevent accidents.

PREMIUMS: ...1st 2nd 3rd 4th 5th
 \$20.00 \$15.00 \$10.00 \$7.50 \$5.00

CLASS 1. 14 to 18 years inclusive (Boys and girls)

**DEPT. 10 JUNIOR GOATS
BUTLER CO. GOAT ROUND-UP
SUPT. - TINA BRYNER (724-865-2418)**

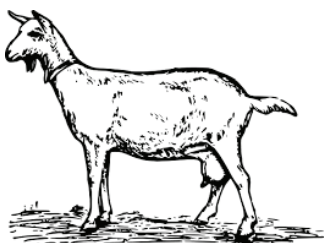
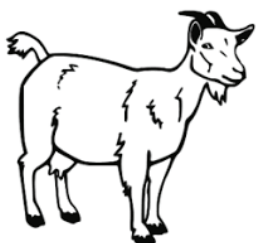
ENTRIES MUST BE RECEIVED ON OR BEFORE SUNDAY, JULY 14, AND MUST INCLUDE (1) A SIGNED ENTRY FORM, (2) A WAIVER OF LIABILITY FORM (in back of book), & (3) COPIES OF OWNERSHIP PAPERS. (If the ownership papers are not with the entry form, the entry will NOT be accepted.)

**ANY AND ALL CLASSES, INCLUDING SHOWMANSHIP, MARKET, HOUSEKEEPING, CARTS, COSTUME, & OBSTACLE, MUST BE ENTERED BY JULY 14.
Entries will not be accepted at the show.**

USE THE GOAT ENTRY FORMS AVAILABLE ONLINE(INTERACTIVE), AT THE EXTENSION OFFICE, OR THE FARM SHOW OFFICE (724-482-4000).

**ARRIVAL: 10:30 AM - 12:30 PM, SUNDAY, AUGUST 4
ALL GOATS MUST BE HEALTH CHECKED BY THE VET BEFORE UNLOADING.**

**RELEASE TIME: 9:00 PM, SATURDAY, AUGUST 10
*Exhibits and/or exhibitors leaving the show early without permission will forfeit premiums and participation in next year's show will be at the discretion of the Board.***



DEPT. 10 JUNIOR GOATS (CONT.)
SHOWTIME - MONDAY starting at 10:00 AM
IN THE DAIRY PAVILION:

MARKET GOATS

SHOWMANSHIP (Starting with Peewees)

CART GOATS (Harness Kid, Harness Yearling, Senior Harness)

DAIRY SENIOR DOES (By Breed/All Breeds)

BEST SR. DOE IN SHOW (All Sr. Bests of Breed competing)

BEST UDDER IN SHOW

DAIRY JUNIOR DOES (By Breed/All Breeds)

BEST JR. DOE IN SHOW (All Jr. Bests of Breed competing)

BOER GOATS

BEST BOER DOES IN SHOW

DAILY MILKING HOURS

6:00 - 9:00 AM 6:00 - 9:00 PM

Pre-Show Milking - Sunday 6:00 PM - 8:00PM

HEALTH REQUIREMENTS FOR GOATS

See Department 6.

RULES & REGULATIONS

1. The Rules for All Exhibitors, Rules for Livestock Exhibitors, Guidelines for Care of Animals, PA Code of Show Ring Ethics & Butler Farm Show Additions, Health Requirements for Goats (Dept. 6) and the Livestock Sale Rules must be followed.
2. **ALL ADGA RULES APPLY TO THE DAIRY GOATS. NO HORNS PERMITTED ON DAIRY GOATS.**
3. Entrants must be carrying a dairy goat project. An up-to-date project record book must accompany the exhibit to the Show.
4. **Entries will NOT be accepted at ringside or after July 14. ALL classes must be pre-entered and listed on your entry form.**
5. 4-H and FFA exhibitors may enter the Open Show (Department 6) by submitting the correct entry fees and indicating entry on the entry form. Unsigned or incomplete entries will be returned.
6. **Copies of registration papers must be sent with the entry form.** A copy of the original registration certification is required for animals 6 months of age or older. For animals under 6 months of age, a copy of the original registration certificate or ADGA stamped duplicate application will be accepted. Proof of animal ownership shall be the name on the registration or on the ADGA stamped duplicate application.
7. The 4-H or FFA member's name must appear as the owner on the registration certificate for each animal entered in the Junior Show. Milking animals or animals over 9 months of age must be owned by the 4-H or FFA exhibitor prior to January 1 of the current year, as shown on the registration papers. All other animals must be owned by the 4-H or FFA exhibitor by June 1 of the current year (as shown on the registration papers) unless a kid is produce of a dam owned by the exhibitor.
8. Kids born after June 1 may be entered provided a project designation form for the dam was submitted by June 1.
9. All goats must have permanent and legible tattoos in accordance with the ADGA rules. Re-tattoos are acceptable when said tattoo matches the legible digits of the original tattoo, is in the same ear as the original tattoo, and an appropriate notification appears on the animal's registration certificate.

DEPT. 10 JUNIOR GOATS (CONT.)

10. Exhibitors are limited to 3 goats per class.
11. Recorded grades must be recorded.
12. Non-recorded or non-registered animals may show in fitting and showmanship only.
13. Exhibitors are required to provide their own feed, pens and bedding. Exhibitors are responsible for feeding and watering their goats daily and keeping the water and pens in a sanitary condition at all times.
14. **All four feet of the goat (market and breeding) must remain on the ground for judging. Exhibitors that intentionally lift the front feet off the ground will be disqualified from the show and will not be eligible to sell in the livestock sale.**
15. All junior exhibitors are expected to show their own animals, except where an exhibitor may have more than one entry in the class. In that case, another junior exhibitor must show the extra animals. In case of absence, such as sickness or school, a note must be presented to the superintendent or their representative indicating that another junior exhibitor is showing the animal. In fitting/showmanship junior exhibitor must show their own animal.
16. GROOMING - Use only grooming products that are approved for use on meat-producing animals when fitting any animal for show. If it is not certain that a product is safe and approved for use on meat animals, DO NOT USE IT.

USE THE GOAT ENTRY FORMS AVAILABLE ONLINE(INTERACTIVE), AT THE EXTENSION OFFICE, OR THE FARM SHOW OFFICE (724-482-4000).

DEPT. 10 SECTIONS 601 - 608

DAIRY GOAT BREED CLASSES

SHOWTIME - MONDAY AT 10:00 AM

FOLLOWING SHOWMANSHIP IN THE DAIRY PAVILION

NO ENTRY FEE FOR JUNIOR SHOW.

SHOW ORDER – SENIOR DOES (By Breed/All Breeds)

JUNIOR DOES (By Breed/All Breeds)

Use these Section Numbers and refer to

DEPT. 6 Sections 1 - 8 for list of available classes.

SECT. 601 ALPINE

SECT. 605 OBERHASLI

SECT. 602 LAMANCHA

SECT. 606 SAANEN

SECT. 603 NIGERIAN DWARF

SECT. 607 TOGGENBURG

SECT. 604 NUBIAN

SECT. 608 RECORDED GRADE

To determine the goat's age class, all dates are calculated backwards from the date of the show.

Additional Class for Junior Exhibitors:

(Must be listed on entry form. No classes entered ringside.)

CLASS 1st 2nd 3rd 4th 5th

18. **BEST BRED & OWNED\$12. \$8. \$6. \$5. \$4.**

One entry per exhibitor.

BEST SR. DOE IN SHOW & BEST UDDER IN SHOW

(SR. BEST OF EACH BREED COMPETING)

*WILL BE SELECTED AFTER THE LAST BREED SHOW
IN THE SENIOR DIVISION.*

BEST JR. DOE IN SHOW

(JR. BEST OF EACH BREED COMPETING)

*WILL BE SELECTED AFTER THE LAST BREED SHOW
IN THE JUNIOR DIVISION.*

DEPT. 10 SECTION 620 BOER GOATS

SHOWTIME - MONDAY AT 10:00 AM

FOLLOWING DAIRY BREED SHOW

NO ENTRY FEE FOR JUNIOR SHOW.

Refer to DEPARTMENT 6 Section 20

for list of available classes.

Additional Class for Junior Exhibitors:

(Must be listed on entry form. No classes entered ringside.)

CLASS 1st 2nd 3rd 4th 5th
35. **BEST BRED & OWNED \$12. \$8. \$6. \$5. \$4.**

One entry per exhibitor.

BEST SR. BOER DOE AND BEST JR. BOER DOE

WILL BE SELECTED AT THE END OF THE SHOW.

DEPT. 10 SECTION 630 JUNIOR MARKET GOATS

SHOWTIME - MONDAY AT 10:00 AM

ENTRIES MUST BE RECEIVED ON OR BEFORE JULY 14

AND MUST INCLUDE (both in back of book)

(1) A SIGNED MARKET ANIMAL ENTRY FORM AND

(2) A WAIVER OF LIABILITY FORM.

MARKET GOATS MUST USE ONLY THE ACCESS (TRACTOR) PATH FOR TRAVELING TO AND FROM THE LIVESTOCK BARN - NOT THE PEDESTRIAN ROADS.

RULES & REGULATIONS

1. Market goats must be born after November 1st of the year preceding the market show but with full baby teeth at final market show weigh-in.
2. Market goats may be wethers or does.
3. **Market goats may have horns or be neatly disbudded (dehorned).**
4. **MINIMUM WEIGHT 60 POUNDS: MAXIMUM 125 POUNDS**
5. **DRENCHING, FORCE OR BOTTLE FEEDING OF ANY ANIMALS, OR USE OF ICING AND/OR ANY TEMPERATURE-ALTERING PRODUCTS WILL RESULT IN DISQUALIFICATION OF THE EXHIBITOR.**
6. 3-6 weight classes paying 10 places will be decided by weight and number of entries at the discretion of the Goat Committee.
7. **Classes for under/overweight goats will NOT be offered. Unders/Overs must be removed from the grounds immediately following weigh-in on Sunday. An under/over goat may remain on the grounds IF it is the ONLY goat the exhibitor has for showmanship.**
8. **All four feet of the goat (market and breeding) must remain on the ground for judging.** Exhibitors that intentionally lift the front feet off the ground will be disqualified and will not be eligible to sell in the livestock sale.

CLASS.....1st 2nd 3rd 4th 5th 6th 7th 8th 9th 10th
\$15. \$14. \$12. \$10. \$9. \$8. \$7. \$6. \$5. \$4.

DEPT. 10 SECTION 640 GOAT SHOWMANSHIP

SHOWTIME - MONDAY AT 10:00 AM

FOLLOWING MARKET GOAT SHOW IN THE DAIRY PAVILION

Must be entered by SUNDAY, July 14.

1. **You must use one of your designated project animals for the showmanship class.**
2. All breeds show together.
3. Exhibitor's age determined as of Jan. 1, current year.

DEPT. 10 SECT. 640 GOAT SHOWMANSHIP (CONT.)

CLASS	1st	2nd	3rd	4th	5th	All Others
	\$12.	\$10.	\$9.	\$8.	\$7.	\$4.

1. **EXHIBITORS 16 - 21 YEARS OF AGE**
2. **EXHIBITORS 14 - 15 YEARS OF AGE**
3. **EXHIBITORS 12 - 13 YEARS OF AGE**
4. **EXHIBITORS 10 - 11 YEARS OF AGE**
5. **EXHIBITORS 8 - 9 YEARS OF AGE**

DEPT. 10 SECTION 650 GOOD HOUSEKEEPING

NOTICE: Must be listed on entry form due by July 14.

DAILY PREMIUMS:..... 1st - \$8. 2nd - \$4. 3rd - \$2.

Exhibits will be scored daily (Monday through Friday) on the following criteria:

1. Cleanliness of animals and bedding.
2. Entry card and ribbons properly displayed with animals.
3. Keeping feed and equipment presentable.
4. Courtesy to people.

DEPT. 10 SECT. 660 GOAT COSTUMES

2019 THEME: FAIRY TALES

SHOWTIME - WEDNESDAY AT 12:00 IN THE DAIRY PAVILION

Must be listed on entry form due by SUNDAY, July 14.

1. The theme will be changed every year.
2. Exhibitor and goat must be dressed.
3. 50% of the costumes must be homemade.

PREMIUMS:..... 1st - \$10. 2nd - \$8. 3rd - \$6.

- CLASS**
1. **EXHIBITORS 16 - 21 YEARS OF AGE**
 2. **EXHIBITORS 14 - 15 YEARS OF AGE**
 3. **EXHIBITORS 12 - 13 YEARS OF AGE**
 4. **EXHIBITORS 10 - 11 YEARS OF AGE**
 5. **EXHIBITORS 8 - 9 YEARS OF AGE**

DEPT. 10 SECT. 670 4-H CART GOAT PROJECT

SHOWTIME - MONDAY AT 10:00 AM

FOLLOWING SHOWMANSHIP

Must be listed on entry form.

This is a multi-year project. The first year of the project, a 4-H member can take a kid in the harness kid class. The second year the animal can come back as a harness-yearling, and the third and succeeding years, the wether is in the senior harness class.

Costumes or clothing are at the exhibitor's discretion. (White outfits are not required.) The exhibitor is encouraged to have a helper standing at the edge of the show ring in order to prevent an uncontrolled exit. All harness goats must be tattooed and disbudded and dehorned. The right ear must contain the PA scarpie ID number and must meet the same health requirements as the dairy and meat animals. No ear tags are permitted. Exhibitors are responsible for their own harnesses and cart.

Exhibitors will be judged individually rather than in a group class. The harness yearling and senior harness will have the option of starting at the edge of the show ring or being lead by a helper to the center of the show ring before the start of judging.

The carts and harnesses will be judged on neatness.

All harness projects must be owned by June 1 of the current year. Only one animal per class per exhibitor will be permitted.

HARNESS YEARLING must be over one year old, but under two years old. He will be harnessed and will pull an unoccupied cart with the use of reins, which are attached to the halter. The project will be judged on the goat's response to the exhibitor's voice commands of "stop," "go," "back," "left," and "right." Judge

DEPT. 10 SECT. 670 GOAT CART (CONT.)

will also consider the exhibitor's appearance, the goat's appearance, and the overall neatness of the cart and harness.

SENIOR HARNESS wether must be two years old or older. The goat will be harnessed and will pull a cart which is occupied and driven by the exhibitor through the use of reins attached to the halter. The project will be judged on the goat's response to the exhibitor's voice commands of "stop," "go," "back," "left," and "right" through an obstacle course. Judge will also consider the exhibitor's appearance, the goat's appearance, and the overall neatness of the cart and harness.

Harness goats cannot be used in a market goat class.

CLASS	1st	2nd	3rd
1. HARNESS KID	\$12.	\$8.	\$6.
2. HARNESS YEARLING	\$12.	\$8.	\$6.
3. SENIOR HARNESS	\$12.	\$8.	\$6.
4. TEAM	\$12.	\$8.	\$6.

**DEPT. 10 SECT. 680 GOAT OBSTACLE COURSE
SHOWTIME - WEDNESDAY AT 1:00 IN THE DAIRY PAVILION
Must be listed on entry form due by SUNDAY, July 14.**

Competitors and their goats will attempt several different obstacles around a course. Winners will be determined by the amount of time needed to complete the course.

RULES & REGULATIONS

1. All competitors must be a 4-H or FFA Member
2. Goats can be any age or appropriate breed. Six months or older is recommended.
3. Only goats shown at Round-Up in another class will be permitted to participate in the goat obstacle course.
4. Each competitor and goat may attempt the obstacle course once. No goat will be allowed to go through the course more than once.
5. All goats must be treated humanely. The competitor will be immediately disqualified if any inhumane acts are observed.
6. Goats must work on collar and lead or a halter (no choke collars).
7. All obstacles must be attempted. If no attempt is made, the competitor is disqualified.
8. A five (5) second penalty will be added to the time for each obstacle refusal. After a second refusal of the same obstacle, the competitor may proceed to the next obstacle and will incur a ten (10) second penalty for that skipped obstacle (five seconds for each refusal).
9. The winner will be the competitor who completes the obstacle course in the shortest amount of time, which could include penalties.
10. The official time of the competitor will be recorded immediately after he or she completes the course. All times are final.

PREMIUMS:..... 1st - \$10. 2nd - \$8. 3rd - \$6.

CLASS	
1.	EXHIBITORS 16 - 21 YEARS OF AGE
2.	EXHIBITORS 14 - 15 YEARS OF AGE
3.	EXHIBITORS 12 - 13 YEARS OF AGE
4.	EXHIBITORS 10 - 11 YEARS OF AGE
5.	EXHIBITORS 8 - 9 YEARS OF AGE